

Shared Revenue Estimates: State Revenue Allocations to Cities and Counties
Local Streets and Roads Estimates: 2020-21, 2021-22
Including Highway Users Tax Account (HUTA) and
Road Maintenance and Rehabilitation Account (RMRA)

The state of California imposes per-gallon excise taxes on gasoline and diesel fuel, sales taxes on gasoline and diesel fuel and registration taxes on motor vehicles with allocations dedicated to transportation purposes.¹ The local (city and county) portions of these allocations flow through the Highway Users Tax Account (HUTA), the familiar gasoline tax revenues that have been in place for decades, and the Road Maintenance and Rehabilitation Account (RMRA) which allocates much of the revenue from the Road Repair and Accountability Act of 2017 (SB1 Beall).

State taxes transferred to and allocated through the state Highway Users Tax Account (HUTA) include:

- The per gallon “gasoline tax” and “diesel fuel tax” imposed on the use of vehicle fuels.
- The “use fuel tax,” imposed on vendors and users of motor vehicle fuels that are not taxed under either the gasoline or diesel fuel tax, such as liquefied petroleum gas, ethanol, methanol and natural gas (both liquid and gaseous) for use on state highways. Use Fuel Tax rates vary depending on the type of fuel.
- Variable rate per gallon gasoline diesel fuel excise taxes imposed in 2010-11 in a complicated arrangement known as the “fuel tax swap.” This rate replaced the previous Proposition 42 sales tax on gasoline.

Transportation taxes allocated to cities and counties through the Road Maintenance and Rehabilitation Account (RMRA) established by the Road Repair and Accountability Act of 2017 (SB1 Beall) include:

- An additional 12 cent per gallon increase to the gasoline excise tax effective November 1, 2017 with annual inflation adjustments beginning July 1, 2020.
- An additional 20 cent per gallon increase to the diesel fuel excise tax effective November 1, 2017 with half of the revenues going to the state Trade Corridor Enhancement Account (TCEA) and half to the RMRA. Annual inflation adjustments beginning July 1, 2020.
- An additional vehicle registration tax called the “Transportation Improvement Fee” with rates based on the value of the motor vehicle effective January 1, 2018 with annual inflation adjustments beginning July 1, 2020.
- An additional \$100 vehicle registration tax on zero emissions vehicles of model year 2020 or later effective July 1, 2020 with annual inflation adjustments beginning July 1, 2021.

The Road Repair and Accountability Act of 2017 (SB1 Beall) also adopted annual inflationary adjustments beginning July 1, 2020 to all per-gallon motor vehicle fuel excise taxes including the rates allocated through the Highway Users Tax Account (HUTA).

¹ Taxes on aircraft jet fuel are transferred to the state Aeronautics Account.

Highway Users Tax Account (HUTA)

Revenue Allocations – Streets & Highways Code Sec 2103-2108 “HUTA”

Cities and counties receive revenue from the motor vehicle fuel taxes imposed pursuant to Revenue and Taxation Code Section 7360(a) and (b) through the Highway User Tax Account under the following formulas outlined in the Streets and Highways code and illustrated in Figure 1.

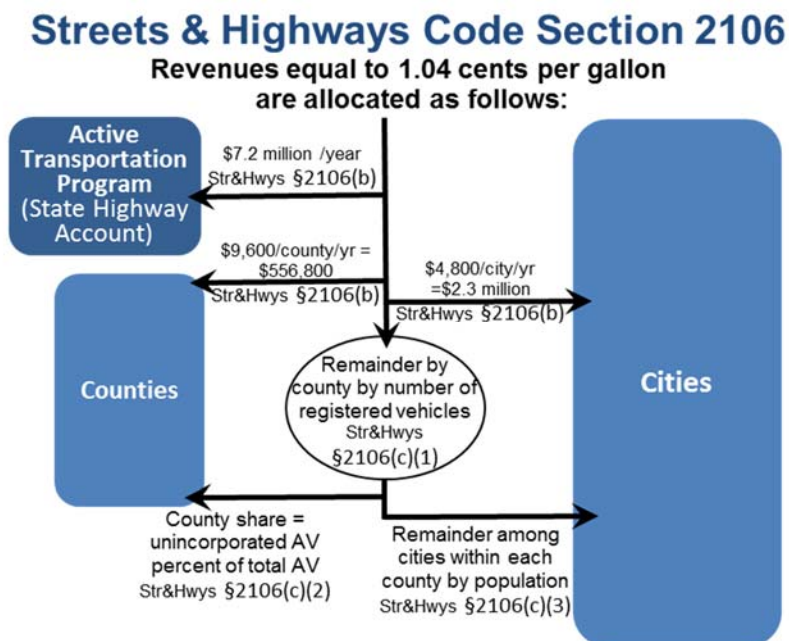
Section 2104. Section 2104 allocates funds to counties with designated allotments for engineering and administration, snow removal, heavy rainfall / storm damage as well as county streets, roads and public mass transit guideways and facilities.

Section 2105. Section 2105(a) allocates 11.5 percent of the tax revenues in excess of 9 cents per gallon (i.e. the Proposition 111 rate) monthly among counties based on population.

Section 2105(b) allocates 11.5 percent of the tax revenues in excess of 9 cents per gallon (i.e. the Proposition 111 rate) monthly among cities based on population.

Section 2106. Revenues equal to 1.04 cents per gallon are allocated as follows:

- \$7.2 million per year to the State Bicycle Transportation Account.
- \$400 per month to each city (\$2,308,800 per year among the 481 eligible cities²)
- \$800 per month to each county (\$556,800 per year among the 58 counties)
- The residual amount to each county and the cities in that county based on registered vehicles. In each county, from this amount, the county receives an allotment based on the share of assessed value of the county which is in the unincorporated area. The remainder is allocated to the cities within the county based on population.



² The city of Rolling Hills has only private streets and is therefore not eligible to receive these allocations.

Section 2107. This section provides monthly allocations to cities of 1.315 cents per gallon of gasoline, 1.8 cents per gallon of diesel, and 2.59 cents per liquefied petroleum gas (LPG), as follows.

- a. Each city with snow removal costs in excess of \$5,000 is allocated 50 percent of the cost exceeding \$5,000.
- b. The remainder is allocated to cities based on population.

Section 2107.5. These funds (about \$2.7 million per year) are allocated to cities annually in July based on population as follows:

Streets & Highway Code §2107.5	
City Population	Annual Allocation
over 500,000	\$ 20,000
100,000 to 500,000	\$ 10,000
50,000 to 99,999	\$ 7,500
25,000 to 49,999	\$ 6,000
20,000 to 24,999	\$ 5,000
15,000 to 19,999	\$ 4,000
10,000 to 14,999	\$ 3,000
5,000 to 9,999	\$ 2,000
less than 5,000	\$ 1,000

Section 2107.5 funds must be used for engineering costs and administrative expenses related to city streets. Cities with populations under 10,000 may also expend the moneys for street construction or acquisition of street rights-of-way.

Section 2103 HUTA and the 2010 Gasoline Sales Tax – Excise Tax Swap

In March 2010 as a part of a special budget session called by Governor Schwarzenegger, the Legislature enacted a swap of state sales taxes on gasoline for a gasoline excise tax. Intended to be “revenue neutral,” the fuel tax swap provided the Legislature with greater flexibility in the use of funds, in particular relieving the general fund from the cost of state transportation debt service payments. The fuel tax swap:

1. Repealed the state sales tax on gasoline (local rates including the Bradley Burns are NOT affected);
2. Increased the excise tax on gasoline by 17.322 cents and added an annual adjustment mechanism intended to ensure the new excise tax provides, over time, the same amount of revenues expected from the sales tax on gas (no more, no less);
3. Increased the sales tax on diesel by 1.75 percent and allocated 75 percent to local transit agencies and 25 percent to state transit programs. The excise tax on diesel was reduced from 18 cents to 13.6 cents. Sales tax revenues from diesel must go to transit funding.
4. Provided for a specific allocation of the funds among state and local transportation needs.

Revenues from the new Section 2103 excise tax rate are now allocated as follows:

1. State transportation debt service;
2. Remainder allocated:
 - a. 44 percent to the State Transportation Improvement Program (STIP);
 - b. 12 percent State Highway Operation and Protection Program (SHOPP);
 - c. 44 percent evenly split between cities and counties using current HUTA formulas.

Section 2103 funds are allocated to cities on a per capita basis and to counties 75 percent based on the proportion of registered vehicles and 25 percent based on the proportion of maintained county road miles.

The law included expressed legislative intent to fully replace the local streets and road funds cities and counties would have received under Proposition 42 state sales tax on gasoline with allocations from the new higher motor vehicle excise tax (HUTA) rate.

However, the swap created certain revenue effects related to the timing and receipt of revenues. In particular, the law provided that the new excise tax rate be adjusted annually by the BOE to garner an amount of revenues equal to what Prop42 would have provided in the prior year. Thus, the annual Sec 2103 funds were always “looking backward.” If the Section 2103 amounts generated less than Prop42 would have, the difference was made up until the following year.

In the years following the swap, there were a number of snafus and changes in interpretation of the Section 2103 allocation. In FY2011-12 SCO allocated more money to cities and counties and did not fully backfill state transportation programs for weight fees that were used for debt service and loans that those funds would have otherwise received. This was contrary to the Legislature’s intention, but the statute was not clear. The statute was clarified in the 2013 budget to clarify the original intent of the weight fee swap to fully backfill state transportation funds. [Streets & Highways Code 2103 (a)(1)(D)].

The Section 2103 Local Streets and Roads allocation to cities and counties have varied and declined dramatically and, due to BOE’s failure to enact a rate increase in 2018, fell to \$244 million for FY2018-19, about 5 percent down from prior year.

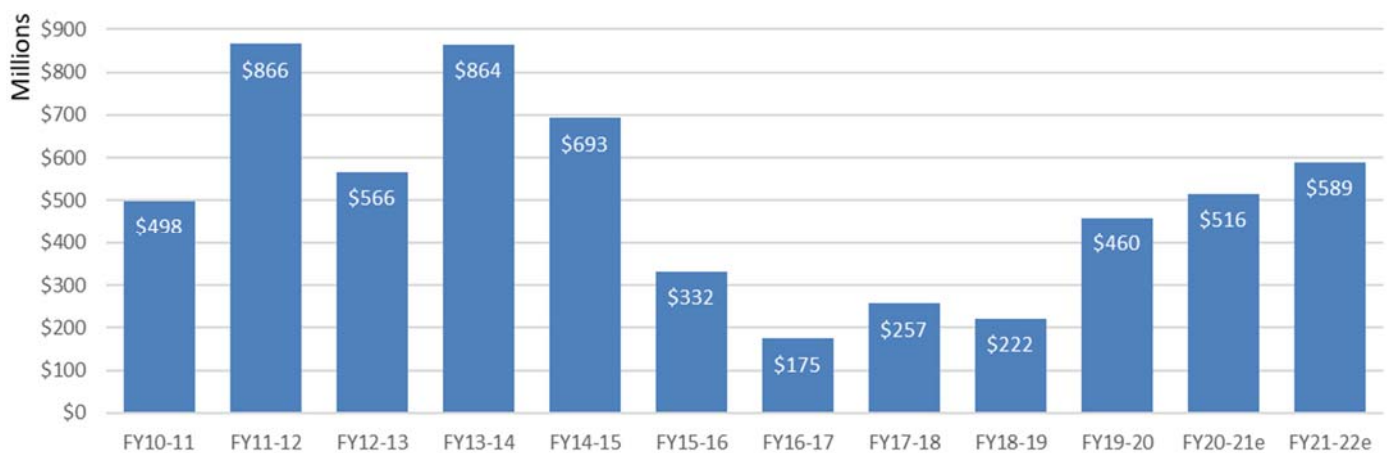
Changes to HUTA Allocated Rates, Including the Variable Rate by the Road Repair and Accountability Act of 2017 (SB1 Beall)

In addition to increasing various fuel and motor vehicle registration taxes, the Road Repair and Accountability Act of 2017 (SB1 Beall) removed BOE’s discretionary rate setting role over the Section 2103 variable rate and reset the variable rate at 17.3 cents per gallon on July 1, 2019, up from the current 11.7 cents. This adjustment more than doubled Section 2103 revenue allocations for FY2019-20 over the prior year.

With regard to diesel fuel taxes, SB1 also eliminated the price-based adjustment mechanism applied to the diesel fuel tax rate.

On July 1, 2020, and every July 1 thereafter, the gasoline and diesel fuel excise tax rates including the 18 cent per gallon base rate, the 17.3 percent per gallon rate, the diesel fuel excise tax rate and vehicle registration taxes are increased by the change in the California Consumer Price Index.

Streets & Highways Code Section 2103 Variable Gas Tax Allocations to Cities and Counties

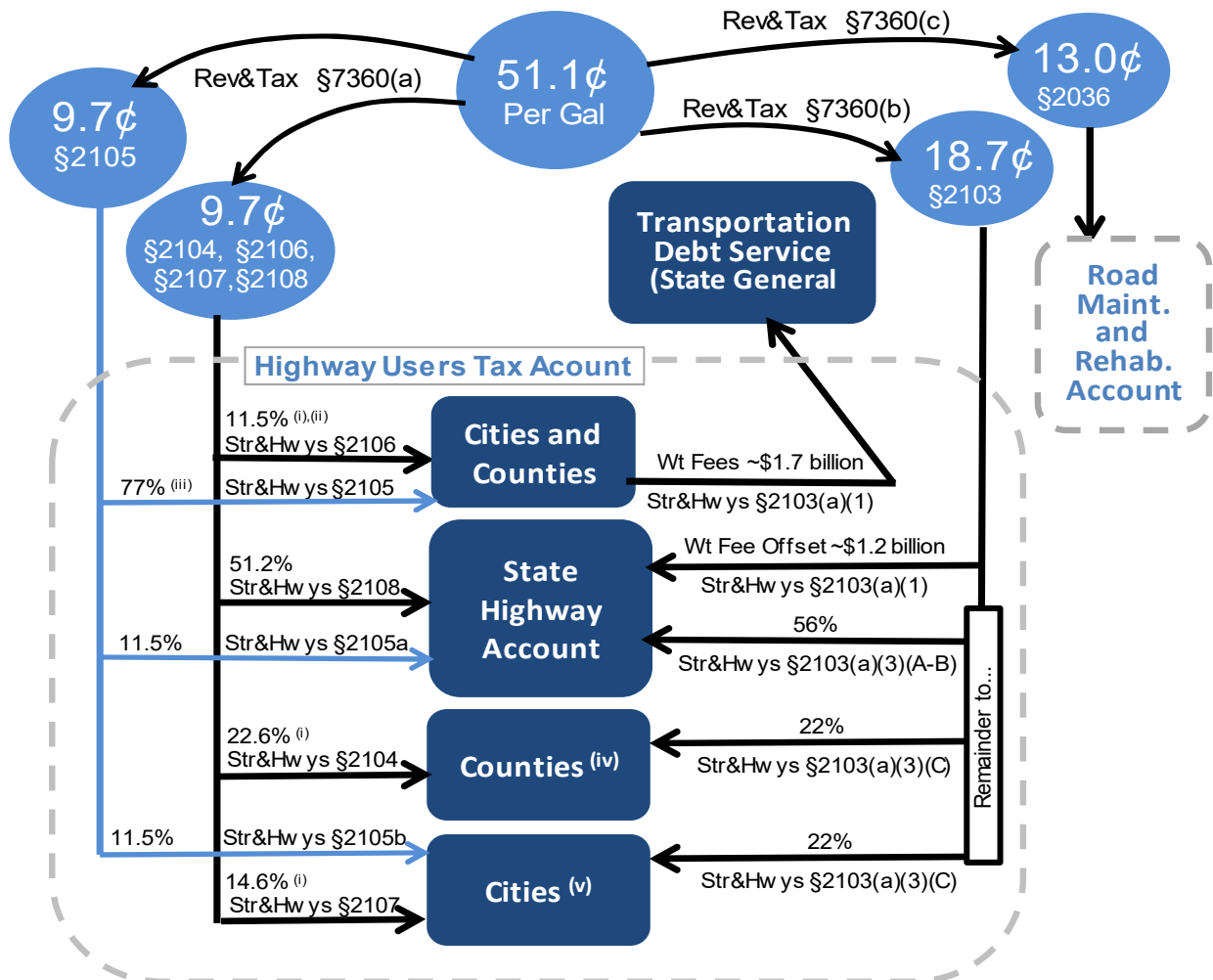


California Gasoline Excise Tax Rates - Per Gallon				
Effective Date	Base Rate	Sec2103	SB1 Rate	Total
July 1, 2010	\$ 0.180	\$ 0.173		\$ 0.353
July 1, 2011	\$ 0.180	\$ 0.177		\$ 0.357
July 1, 2012	\$ 0.180	\$ 0.180		\$ 0.360
July 1, 2013	\$ 0.180	\$ 0.215		\$ 0.395
July 1, 2014	\$ 0.180	\$ 0.180		\$ 0.360
July 1, 2015	\$ 0.180	\$ 0.120		\$ 0.300
July 1, 2016	\$ 0.180	\$ 0.098		\$ 0.278
July 1, 2017	\$ 0.180	\$ 0.117		\$ 0.297
Nov 1, 2017*	\$ 0.180	\$ 0.117	\$ 0.120	\$ 0.417
July 1, 2019	\$ 0.180	\$ 0.173	\$ 0.120	\$ 0.473
July 1, 2020	\$ 0.192	\$ 0.185	\$ 0.128	\$ 0.505
July 1, 2021 (est)	\$ 0.194	\$ 0.187	\$ 0.130	\$ 0.511

California Diesel Excise Tax Rates			
Effective Date	Base Rate	SB1 Rate	Total
July 1, 2017	\$ 0.160		
Nov 1, 2017*	\$ 0.160	\$ 0.200	\$ 0.360
July 1, 2019	\$ 0.160	\$ 0.200	\$ 0.360
July 1, 2020	\$ 0.171	\$ 0.214	\$ 0.385
July 1, 2021 (est)	\$ 0.176	\$ 0.220	\$ 0.396

Rates effective July 1, 2021

Allocation of Gasoline Excise Tax Revenues



Use of Funds: HUTA

The use of local Motor Vehicle Fuel Tax funds is restricted by Article XIX of the California State Constitution and by Streets and Highways Code Section 2101. All Motor Vehicle Fuel Tax funds allocated from the Highway Users Tax Account must be expended for the following:

- (a) The research, planning, construction, improvement, maintenance, and operation of public streets and highways (and their related public facilities for nonmotorized traffic), including the mitigation of their environmental effects, the payment for property taken or damaged for such purposes, and the administrative costs necessarily incurred in the foregoing purposes.
- (b) The research and planning for exclusive public mass transit guideways (and their related fixed facilities), the payment for property taken or damaged for such purposes, and the administrative costs necessarily incurred in the foregoing purposes.
- (c) The construction and improvement of exclusive public mass transit guideways (and their related fixed facilities), including the mitigation of their environmental effects, the payment for property taken or damaged for such purposes, the administrative costs necessarily incurred in the foregoing purposes, and the maintenance of the structures and the immediate right-of-way for the public mass transit guideways.
- (d) The payment of principal and interest on voter-approved bonds issued for the purposes specified above.

Three Year State General Fund TCRF Loan Repayment Funds

SB1 stipulated the repayment of \$706 million by the state General Fund to transportation funds over three fiscal years: 2017-18, 2018-19, and 2019-20. Under SB1, \$75 million was allocated to local streets and roads from repayments of Transportation Congestion Relief Funds (TCRF) in each of these three years. These funds were allocated half to cities and half to counties with the city funds allocated among cities on a per capita basis, the county funds allocated among counties based on numbers of registered vehicles and county road mileage.

These TCRF revenues may be deposited in local HUTA funds.³ However, these TCRF funds carry slightly different use requirements than HUTA funds. TCRF funds may be expended only for street and highway maintenance, rehabilitation, reconstruction or storm damage repair. For these purposes,

- “Maintenance” means patching and/or overlay and sealing.
- “Reconstruction” includes any overlay, sealing or widening of the roadway, if the widening is necessary to bring the roadway width to the state minimum standards, but does not include widening for the purpose of traffic capacity.
- “Storm damage repair” is repair or reconstruction of local streets and highways and related drainage improvements that have been damaged due to winter storms and flooding, and construction of drainage improvements to mitigate future roadway flooding and damage problems, in those jurisdictions that have been declared disaster areas by the President of the United States.

³ Note that the “loan repayment” is between the state general fund and state transportation funds. From an accounting standpoint this is NOT a debt repayment to local agencies, it is simply revenue.

Road Maintenance and Rehabilitation Account (RMRA)

Revenue Allocations – Streets & Highways Code Sec 2031 “RMRA”

The Road Repair and Accountability Act of 2017 (SB1 Beall) represented a significant additional investment in California’s transportation systems of over \$5 billion per year. The Act increased per gallon fuel excise taxes, diesel fuel sales taxes and vehicle registration taxes, stabilized the problematic price-based fuel tax rates and provided for inflationary adjustments to rates in future years. The Act is more than doubling local streets and road funds allocated through the Highway Users Tax Account (HUTA) and through the Road Maintenance and Rehabilitation Account (RMRA) which it established.

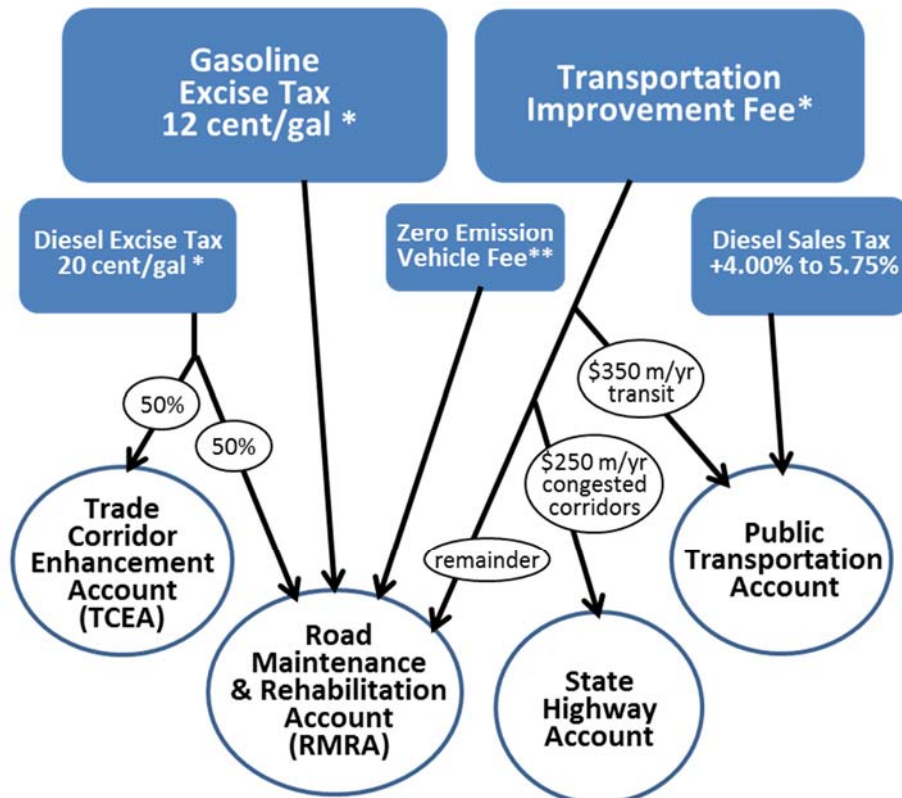
The RMRA receives funds⁴ from the following new taxes imposed under the Road Repair and Accountability Act of 2017:

- A 12 cent per gallon increase to the gasoline excise tax effective November 1, 2017.
- A 20 cent per gallon increase to the diesel fuel excise tax effective November 1, 2017, half of which will be allocated to Trade Corridors Enhancement Account (TCEA) with the remaining half to the RMRA.
- A new vehicle registration tax called the “transportation improvement fee,” effective January 1, 2018, based on the market value of the vehicle.
- An additional new \$100 vehicle registration tax on zero emission vehicles model year 2020 and later effective July 1, 2020.
- Annual rate increases to these taxes beginning July 1, 2020 (July 1, 2021 for the ZEV fee), and every July 1 thereafter for the change in the California Consumer Price Index. The first adjustment to be made on July 1, 2020 will cover CPI change for two years: November 1, 2017 through November 12, 2019.

SB1 Transportation Improvement Fee			
Vehicle Value	Effective Date		
	Jan 2018	Jan 2020	Jan 2021
0 - \$4,999	\$ 25	\$ 27	\$ 27
\$5,000 - \$24,999	\$ 52	\$ 54	\$ 55
\$25,000 - \$34,999	\$ 105	\$ 107	\$ 110
\$35,000 - \$59,999	\$ 157	\$ 161	\$ 165
\$60,000 & over	\$ 183	\$ 188	\$ 192

⁴ In addition, funds from a 4 percent increase in the diesel sales tax to 5.75 percent from the prior 1.75 percent effective November 1, 2017 are allocated to the Public Transportation Account.

Road Maintenance and Rehabilitation Account Revenues



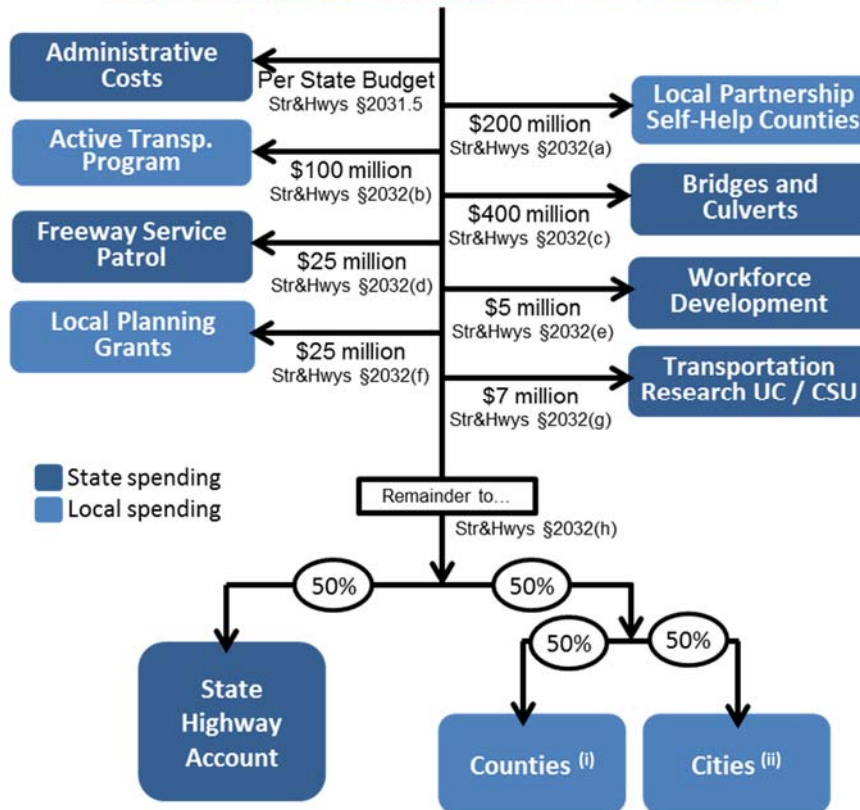
* adjusted for inflation annually beginning 7/1/2020

** effective 7/1/2020 adjusted for inflation annually beginning 7/1/2021

The Road Repair and Accountability Act directs the State Controller to allocate, on a monthly basis, fifty percent of the revenues in the RMRA to the State Highway Operation and Protection Program (SHOP) in the State Highway Account and half to cities and counties. But there are a series of specific program allocations, subject to appropriation in the annual state budget, to be taken out first:

1. Administrative costs.
2. \$200 million for the State-Local-Partnership Program for existing and aspiring self-help jurisdictions.
3. \$100 million annually for the Active Transportation Program for the purpose of encouraging increased use of active modes of transportation, such as biking and walking.
4. \$400 million for state bridge and culvert maintenance and rehabilitation.
5. \$25 million for the state's Freeway Service Patrol program.
6. \$5 million for five years through FY 2021-22 for pre-apprenticeship training programs of the California Workforce Development Board.
7. \$25 million for local planning grants to encourage local and regional planning.
8. \$7 million for transportation research and transportation-related workforce education, training, and development including \$5 million to the University of California and \$2 million to the California State University.

Allocation of Road Maintenance and Rehabilitation Account Revenues



(i) County apportionments are based on numbers of registered vehicles and county road mileage.
(ii) City apportionments are based on population.

Use of Funds: RMRA [Streets and Highways Code Section 2030]

The use of RMRA local streets and roads funds is similar but, not identical, to HUTA use rules. Pursuant to Streets and Highways Code Section 2030, RMRA local streets and roads allocations must be used for projects "that include, but are not limited to," the following

- Road maintenance and rehabilitation
- Safety projects
- Railroad grade separations
- Traffic control devices
- Complete street components, "including active transportation purposes, pedestrian and bicycle safety projects, transit facilities, and drainage and storm-water capture projects in conjunction with any other allowable project."

RMRA funds may also be used to satisfy a match requirement for projects eligible for state or federal funds.

SB1 also contains non-obligatory intent language regarding the use of funds. "To the extent possible and cost effective," cities and counties are to use a use:

- advanced recycling techniques that reduce greenhouse gas emissions;
- automotive technologies, ZEV fueling, infrastructure-to-vehicle;
- communications autonomous vehicle systems;

- resiliency re climate change, fires, floods, sea level rise; and
- complete street elements, access for bicycles, pedestrians.

If a city or county has an average Pavement Condition Index that meets or exceeds 80, the city or county may spend its RMRA funds on transportation priorities other than these. [Streets and Highways Code Sec 2037]

Maintenance of Effort: RMRA [Streets and Highways Code Sec 2036]

The Road Repair and Accountability Act contains a local agency maintenance of effort (MOE) requirement that applies to funds allocated through the RMRA. The Act states that the MOE requirement is to ensure that these new roads funds do not supplant existing levels of city and county general revenue spending on streets and roads. The MOE for the receipt of RMRA funds state that a city or county must maintain general fund spending for street, road, and highway purposes at no less than average of 2009–10, 2010–11, and 2011–12 years. In making this calculation an agency may exclude one-time funds. A city or county that fails to comply in a particular year may make it up with in additional expenditures in the following year.

The Act provides that the State Controller may perform audits to ensure compliance with these MOE rules. If the State Controller determines that a city or county has not met its MOE, the agency will be required to reimburse the state for the funds it received during that fiscal year. However, a city or county that fails to comply in a particular fiscal year may expend during that fiscal year and the following fiscal year a total amount that is sufficient to comply. Any funds withheld or returned as a result of a failure to comply will be reapportioned to the other counties and cities whose expenditures are in compliance.

For further guidance, see the State Controller's *"Guidelines Relating to Gas Tax Expenditures for Cities and Counties."*

Spending Plans and Reports: RMRA [Streets and Highways Code Sec 2034]

The Road Repair and Accountability Act stipulates that, prior to receiving RMRA funds in a fiscal year, a city or county must submit to the California Transportation Commission (CTC) a project list pursuant to an adopted budget. The list must include for each project: description, location, schedule, useful life. [Streets and Highways Code Sec 2034(a)]

The Road Repair and Accountability Act also requires that a city or county submit to the CTC an annual report of project completion in order to receive RMRA funds. The report must include descriptions of all projects for which RMRA funds were expended including: description, location, funds expended, completion date, estimated useful life of the project.

There are no additional use or reporting requirements on Highway Users Tax Account funds (Streets and Highways Code Sec 2103-2107) or on the three year transportation loan repayment funds.

Budgeting and Accounting for RMRA Funds: The ~60 Day Delay

The allocation of Road Maintenance and Rehabilitation Account (RMRA) revenues to cities and counties takes many weeks. It takes the State Controller's Office roughly 30 to 60 days from the time of revenue collection by the state, through the various statutory set asides to distribute the funds to cities and counties in monthly allocations. Consequently, the estimates shown in this report are for revenues collected for July through June are not received on a cash basis by local agencies until September through August. That is, for example, the FY2020-21 figure for your agency is revenues collected in and for July 2020 through June 2021 but distributed in

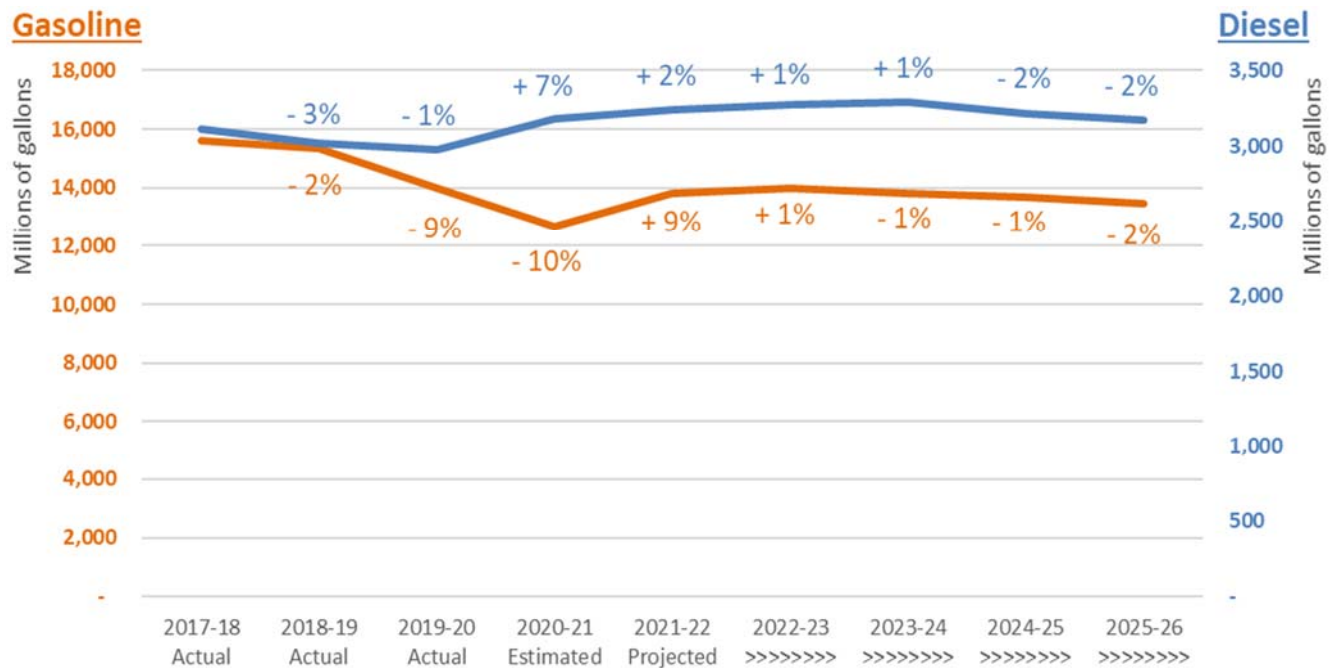
monthly allocations September 2020 through August 2021. Cities and counties thus have two choices in the budgeting and accounting of RMRA revenues:

- 1) apply a 60 day accrual policy to RMRA funds (*recommended*); or
- 2) adjust RMRA budgets (especially in FY2017-18) to reflect a distributed cash basis.

Local Streets and Roads (HUTA and RMRA) Revenue Estimates for FY2020-21 and FY2021-22

We have computed revenue estimates for each city and county using a model reflecting the local allocation formulas, latest population figures used by the State Controller for allocations and estimates by the state Department of Finance (DOF) of statewide HUTA and RMRA tax revenues provided in the Governor’s May Revision to his Proposed 2021-22 Budget (released May 14, 2021) and analyses of SB1(Beall), The Road Repair and Accountability Act of 2017.

To the surprise of no one, fuel consumption is down due to the COVID-19 pandemic. The price of fuel is also down from prior years, but local streets and roads revenues are no longer related to fuel prices, only to fuel consumption.



Lower fuel consumption has been partially offset by scheduled rate increases stipulated in SB1 (described above). Total 2019-20 LSR allocations (including HUTA, TCRF, and RMRA) were 4.0 percent above 2018-19. For 2020-21, estimated total LSR allocations are now projected to be 1.1 percent lower than 2019-20. For the budget year FY2021-22, the Department of Finance projects total LSR allocations to cities and counties to bounce back strongly, 11.9 percent above the current FY2020-21 year. These estimates are lower than those issued in January, reflecting a deeper pandemic-induced slump in fuel consumption than was previously estimated.

HUTA

Revenues allocated to cities and counties through HUTA under Sections 2103-2107 of the Streets and Highways Code are derived from per gallon rates. As described above, these rates are adjusted annually on July 1. Revenue changes depend on the combined effects of 1) these rate adjustments, 2) taxable gallonage, and 3) the relative change of statutory transfers including the “weight fee offset” that pays state transportation bond debt.

Statewide fuel consumption (gallons) had been relatively flat in recent years. The COVID-19 pandemic and related restrictions caused a steep decline in fuel consumption in the spring of 2020. The effects of this are expected to ease up gradually as restrictions are lifted and travel resumes. Sec2104-2108 HUTA allocations (not including RMRA or the sec2103 variable fuel taxes) dropped 6.5 percent in 2019-20 from the prior 2018-19 year. But this drop-off was more than offset by the doubling of the Sec2103 allocations due to the reset of the formerly price-based rate. FY2019-20 contained the most dramatic fiscal and economic effects of the pandemic, those during the months of April through June 2020.

The May 2021 California Department of Finance (DOF) estimates show LSR allocations under Sec2104-2108 HUTA for the FY2020-21 year increasing just 1.4 percent from the prior 2019-20 year. Section 2103 revenues, affected by the nature of certain fixed set-asides, are projected to decline by 6.7 percent from FY2019-20. Overall, HUTA allocations will decrease 1.1 percent in FY2020-21 over the prior year.

With a recovery in fuel consumption as the COVID effects begin to ease and with additional rate adjustments kicking in July 1, 2021, the DOF estimates total HUTA revenue growth of 11.8 percent over the 2020-21 year.

RMRA⁵

The Road Repair and Accountability Act (SB1) taxes that provide funding to cities and counties through the Revenues to the Road Maintenance and Rehabilitation Account (RMRA) began on November 1, 2017 when the new per-gallon fuel excise taxes took effect. On January 1, 2018, the new vehicle registration tax, the “Transportation Improvement Fee,” took effect. Cities, counties and other recipients of these revenues saw the first full year of these revenues in FY2018-19. A \$100 zero emission vehicle registration tax began on July 1, 2020.

May 2021 DOF estimates of RMRA revenues for FY2020-21 are 4.2 *percent lower* than estimated in January 2021, our last estimate. DOF estimates FY2020-21 RMRA revenues will be 1.2 percent lower than FY2019-20 actuals and that FY2021-22 revenues will grow by 12.1 percent over the current year as fuel consumption increases with the easing of the pandemic, together with scheduled tax rate increases.

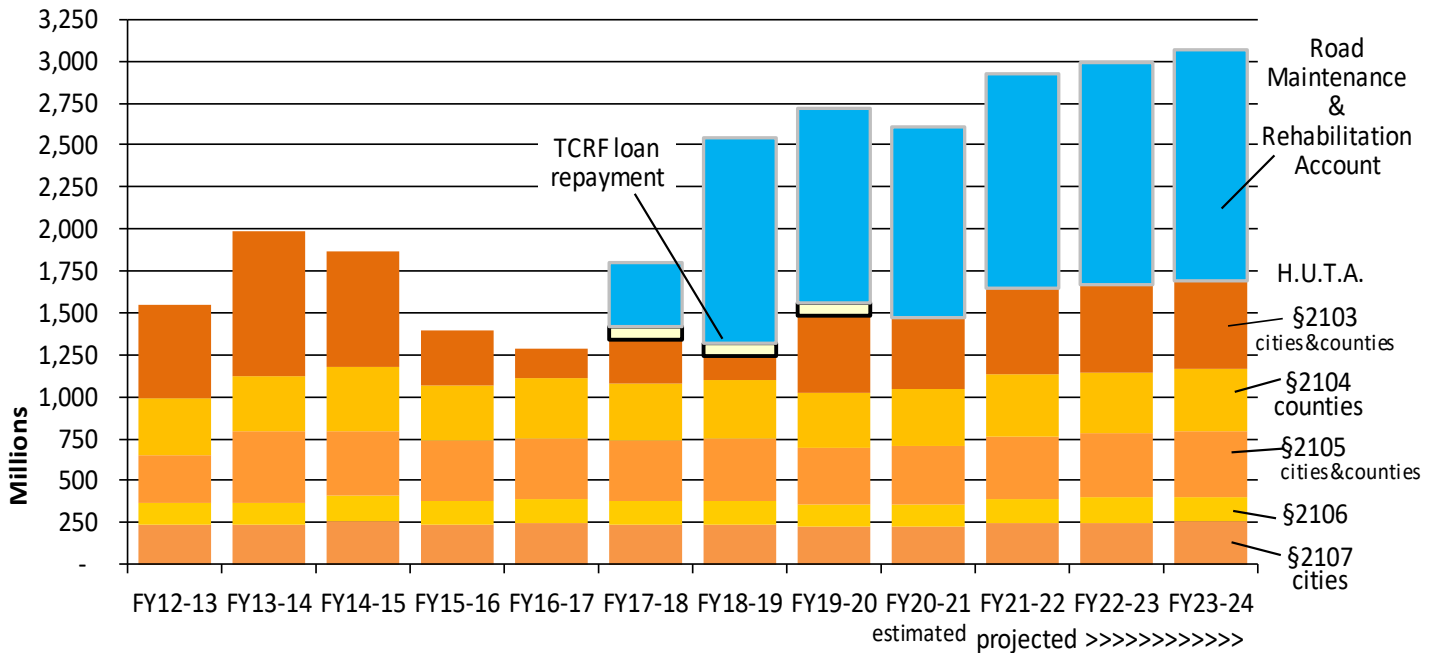
Why does city/county RMRA growth differ from city/county HUTA growth? Under SB1, various fixed-amount statutory allocations are made from the new SB1 tax rates prior to the city and county allocations.

Your Mileage Revenues May Vary

An individual city’s allocations will of course also be affected by change in the city’s population relative to the change in state population. Changes for allocations to counties will be affected other factors in the allocation rules including relative numbers of vehicle registrations, assessed values and maintained road miles.

⁵ Note that RMRA revenues are delayed 60 days from collection to allocation. That is, the revenues for a July 1 to June 30 fiscal year are allocated September 1 through August 31. These are spendable in the fiscal year because your accounting staff “accrues” them back into your fiscal year.

California Local Streets and Roads Program - State Funds to Cities and Counties



Looking Ahead: Long Term Estimates of Local Streets and Roads Funding

Assuming a gradual recovery from the COVID-19 pandemic of 2020, we can expect stable, modest year over year growth in local streets and roads revenues in future years. While fuel consumption may remain flat overall, annual cost of living adjustments will help to maintain revenues.

Due to complicated statutory transfers from these revenues before the city and county allocations are made (including the \$1.7 billion transfer for state transportation debt service), actual growth in funding allocated to cities and counties varies somewhat among the various categories of local streets and roads allocations and will not exactly mirror total tax collections. Taking all these factors into account, for the purposes of long-term transportation program planning, we estimate transportation allocations to cities and counties will increase in outyears at the following growth rates:

	Estimated Annual Revenue Growth Rate over prior year					
	2022-23	2023-24	2024-25	2025-26	2026-27	Beyond
HUTA 2103	1.7%	1.5%	1.4%	1.2%	1.2%	1.2%
HUTA 2104	1.7%	1.5%	1.4%	1.2%	1.2%	1.2%
HUTA 2105	1.7%	1.5%	1.4%	1.2%	1.2%	1.2%
HUTA 2106 county	1.5%	1.3%	1.2%	1.0%	1.0%	1.0%
HUTA 2106 city	1.9%	1.7%	1.5%	1.4%	1.4%	1.4%
HUTA 2107	1.7%	1.5%	1.4%	1.2%	1.3%	1.2%
RMRA	2.9%	3.9%	3.7%	4.8%	5.7%	3.0%

Your Mileage Revenues May Vary

Allocations to each particular city also will be affected by annual changes in the city’s population relative to the change in state population in cities. The current forecast for California population, provided by the Demographics Unit of the California Department of Finance is as follows:⁶

California	<u>2021</u>	<u>2022</u>	<u>2023</u>	<u>2024</u>	<u>2025</u>	<u>2026</u>	<u>2027</u>	<u>2028</u>
Population	40,311,230	40,507,293	40,716,512	40,938,929	41,176,614	41,405,901	41,629,615	41,847,285
Population in Cities	33,235,160	33,430,204	33,636,473	33,854,035	34,084,636	34,308,707	34,528,569	34,743,819
percent change		0.59%	0.62%	0.65%	0.68%	0.66%	0.64%	0.62%
		<u>2029</u>	<u>2030</u>	<u>2031</u>	<u>2032</u>	<u>2033</u>	<u>2034</u>	<u>2035</u>
Population		42,058,192	42,263,654	42,461,647	42,654,978	42,841,669	43,021,656	43,195,083
Population in Cities		34,953,844	35,159,725	35,359,762	35,556,278	35,747,612	35,933,693	36,114,626
percent change		0.60%	0.59%	0.57%	0.56%	0.54%	0.52%	0.50%

If you think your city’s population growth will be significantly different from the statewide average in cities, then you should adjust accordingly. For example, the City of Agatha’s planning department estimates the city will see average annual residential population growth of 1.5 percent annually over the next ten years. The city’s estimated HUTA 2105 allocation for FY2021-22 is \$381,200. The long term projection of Section 2105 revenue would be:

$$\$381,200 \times \text{Sec2105 growth} \times \text{Agatha Population Growth} \div \text{Statewide City Population Growth}$$

$$\text{So, for 2022-23, the city would estimate } \$381,200 \times 1.017 \times 1.015 \div 1.0062 = \$391,071$$

And long term ...

	<u>2021-22</u>	<u>2022-23</u>	<u>2023-24</u>	<u>2024-25</u>	<u>2025-26</u>	<u>2026-27</u>	<u>2027-28</u>
HUTA Sec2015	\$ 381,200						
2105 growth		1.7%	1.5%	1.4%	1.2%	1.2%	1.2%
Agatha pop		1.5%	1.5%	1.5%	1.5%	1.5%	1.5%
Cities pop		0.62%	0.65%	0.68%	0.66%	0.64%	0.62%
HUTA Sec2015	\$ 391,071	\$ 400,289	\$ 409,199	\$ 417,565	\$ 426,187	\$ 435,073	

Changes for allocations to counties will be affected other factors in the allocation rules including relative numbers of vehicle registrations, assessed values and maintained road miles.

mjgc

ATTACHMENTS:

- A) Local Streets and Roads - Projected Individual City Revenues – FY2020-21
- B) Local Streets and Roads - Projected Individual City Revenues – FY2021-22
- C) Local Streets and Roads - Projected Individual County Revenues – FY2020-21
- D) Local Streets and Roads - Projected Individual County Revenues – FY2021-22

⁶ See <http://www.dof.ca.gov/Forecasting/Demographics/projections/>

Local Streets and Roads - Projected FY2020-21 Revenues

Based on State Dept of Finance statewide revenue projections

Estimated May 2021

	Highway Users Tax Acct (HUTA) ⁽¹⁾ Streets & Highways Code					TOTAL HUTA	Road Mntnc Rehab Acct	TOTAL
	Sec2103 ⁽⁵⁾	Sec2105 ⁽³⁾	Sec2106 ⁽³⁾	Sec2107 ⁽³⁾	Sec2107.5 ⁽⁴⁾			
ALAMEDA COUNTY								
ALAMEDA	524,143	423,246	242,929	536,732	7,500	1,734,551	1,393,778	3,128,329
ALBANY	122,069	98,571	60,259	125,001	4,000	409,900	324,601	734,501
BERKELEY	790,160	638,055	363,786	809,138	10,000	2,611,140	2,101,157	4,712,296
DUBLIN	423,610	342,066	197,255	433,785	7,500	1,404,216	1,126,445	2,530,661
EMERYVILLE	79,274	64,014	40,816	81,178	3,000	268,281	210,801	479,083
FREMONT	1,509,800	1,219,165	690,734	1,546,063	10,000	4,975,761	4,014,790	8,990,551
HAYWARD	1,033,377	834,453	474,285	1,058,197	10,000	3,410,311	2,747,908	6,158,219
LIVERMORE	592,143	478,156	273,823	606,365	7,500	1,957,987	1,574,599	3,532,586
NEWARK	315,639	254,879	148,201	323,220	6,000	1,047,938	839,331	1,887,269
OAKLAND	2,795,644	2,257,486	1,274,919	2,862,790	10,000	9,200,839	7,434,046	16,634,885
PIEDMONT	73,827	59,615	38,341	75,600	3,000	250,383	196,317	446,701
PLEASANTON	512,231	413,627	237,517	524,534	7,500	1,695,409	1,362,101	3,057,510
SAN LEANDRO	566,803	457,695	262,311	580,417	7,500	1,874,726	1,507,217	3,381,943
UNION CITY	474,670	383,296	220,452	486,070	7,500	1,571,989	1,262,220	2,834,208
ALPINE COUNTY								
AMADOR COUNTY								
AMADOR	1,193	963	5,498	1,221	1,000	9,875	3,171	13,046
IONE	51,620	41,683	35,014	52,860	2,000	183,177	137,266	320,443
JACKSON	31,328	25,297	23,137	32,080	1,000	112,842	83,306	196,148
PLYMOUTH	6,478	5,231	8,592	6,634	1,000	27,935	17,227	45,162
SUTTER CREEK	16,122	13,018	14,236	16,509	1,000	60,885	42,870	103,755
BUTTE COUNTY								
BIGGS	11,938	9,640	10,042	12,225	1,000	44,845	31,745	76,591
CHICO	711,170	574,271	317,089	728,251	10,000	2,340,780	1,891,110	4,231,890
GRIDLEY	42,441	34,271	23,437	43,460	2,000	145,609	112,857	258,466
OROVILLE	125,312	101,189	59,827	128,321	4,000	418,650	333,223	751,873
PARADISE	169,003	136,470	79,013	205,478	6,000	595,965	449,406	1,045,370
CALAVERAS COUNTY								
ANGELS CAMP	26,577	21,461	25,417	27,216	1,000	101,671	70,673	172,343
COLUSA COUNTY								
COLUSA	39,805	32,142	16,642	40,761	2,000	131,349	105,846	237,195
WILLIAMS	34,976	28,243	15,205	35,816	2,000	116,242	93,008	209,249

Local Streets and Roads - Projected FY2020-21 Revenues

Based on State Dept of Finance statewide revenue projections

Estimated May 2021

	Highway Users Tax Acct (HUTA) ⁽¹⁾ Streets & Highways Code					TOTAL HUTA	Road Mntnc Rehab Acct	TOTAL
	Sec2103 ⁽⁵⁾	Sec2105 ⁽³⁾	Sec2106 ⁽³⁾	Sec2107 ⁽³⁾	Sec2107.5 ⁽⁴⁾			
CONTRA COSTA COUNTY								
ANTIOCH	725,312	585,691	359,340	742,733	10,000	2,423,076	1,928,717	4,351,793
BRENTWOOD	419,756	338,953	209,980	429,837	7,500	1,406,027	1,116,195	2,522,221
CLAYTON	73,079	59,012	40,522	74,834	3,000	250,447	194,329	444,776
CONCORD	838,912	677,422	414,868	859,061	10,000	2,800,263	2,230,795	5,031,057
DANVILLE	282,828	228,384	143,049	289,621	6,000	949,882	752,083	1,701,965
EL CERRITO	160,849	129,886	83,424	164,712	5,000	543,871	427,722	971,593
HERCULES	164,568	132,889	85,243	168,521	6,000	557,221	437,612	994,833
LAFAYETTE	165,045	133,274	85,476	169,009	6,000	558,805	438,881	997,686
MARTINEZ	239,188	193,145	121,717	244,933	6,000	804,983	636,038	1,441,021
MORAGA	109,235	88,208	58,195	111,859	4,000	371,497	290,473	661,970
OAKLEY	273,707	221,019	138,590	280,281	6,000	919,597	727,828	1,647,425
ORINDA	122,533	98,946	64,695	125,476	4,000	415,651	325,835	741,487
PINOLE	125,731	101,528	66,258	128,751	4,000	426,267	334,337	760,605
PITTSBURG	479,079	386,857	238,978	490,585	7,500	1,602,999	1,273,944	2,876,943
PLEASANT HILL	220,888	178,367	112,772	226,193	6,000	744,220	587,374	1,331,594
RICHMOND	716,913	578,908	355,234	734,132	10,000	2,395,188	1,906,382	4,301,570
SAN PABLO	202,491	163,511	103,779	207,354	6,000	683,135	538,454	1,221,589
SAN RAMON	535,785	432,647	266,697	548,654	7,500	1,791,282	1,424,734	3,216,017
WALNUT CREEK	456,769	368,842	228,073	467,740	7,500	1,528,923	1,214,619	2,743,542
DEL NORTE COUNTY								
CRESCENT CITY	49,267	39,783	22,464	50,451	2,000	163,966	131,009	294,975
EL DORADO COUNTY								
PLACERVILLE	70,778	57,153	56,318	72,478	3,000	259,727	188,209	447,936
SOUTH LAKE TAHOE	145,198	117,247	110,487	1,193,873	5,000	1,571,805	386,103	1,957,909

Local Streets and Roads - Projected FY2020-21 Revenues

Based on State Dept of Finance statewide revenue projections

Estimated May 2021

	Highway Users Tax Acct (HUTA) ⁽¹⁾ Streets & Highways Code					TOTAL HUTA	Road Mntnc Rehab Acct	TOTAL
	Sec2103 ⁽⁵⁾	Sec2105 ⁽³⁾	Sec2106 ⁽³⁾	Sec2107 ⁽³⁾	Sec2107.5 ⁽⁴⁾			
FRESNO COUNTY								
CLOVIS	768,211	620,331	308,936	786,662	10,000	2,494,141	2,042,791	4,536,932
COALINGA	116,590	94,147	50,958	119,390	4,000	385,086	310,031	695,117
FIREBAUGH	51,446	41,543	25,168	52,682	2,000	172,838	136,803	309,641
FOWLER	41,603	33,594	21,271	42,602	2,000	141,070	110,629	251,699
FRESNO	3,518,068	2,840,845	1,397,609	3,602,566	20,000	11,379,088	9,355,084	20,734,173
HURON	47,050	37,993	23,427	48,180	2,000	158,650	125,113	283,763
KERMAN	102,815	83,023	45,505	105,284	4,000	340,627	273,401	614,028
KINGSBURG	83,045	67,059	37,678	85,039	3,000	275,821	220,829	496,649
MENDOTA	80,666	65,138	36,736	82,604	3,000	268,144	214,504	482,648
ORANGE COVE	60,954	49,221	28,932	62,418	2,000	203,525	162,086	365,611
PARLIER	102,428	82,711	45,351	104,888	4,000	339,379	272,372	611,751
REEDLEY	167,063	134,904	70,941	171,076	6,000	549,982	444,246	994,229
SANGER	175,237	141,504	74,176	179,445	6,000	576,362	465,981	1,042,343
SAN JOAQUIN	26,700	21,560	15,370	27,341	1,000	91,971	70,998	162,969
SELMA	157,516	127,195	67,161	161,300	5,000	518,171	418,860	937,032
GLENN COUNTY								
ORLAND	53,651	43,323	23,897	54,939	2,000	177,810	142,665	320,476
WILLOWS	40,017	32,314	19,044	40,978	2,000	134,354	106,412	240,766
HUMBOLDT COUNTY								
ARCATA	115,791	93,501	67,187	118,572	4,000	399,051	307,906	706,956
BLUE LAKE	8,232	6,647	9,235	8,429	1,000	33,543	21,889	55,432
EUREKA	175,275	141,535	99,236	179,485	6,000	601,531	466,084	1,067,615
FERNDALE	8,908	7,194	9,600	9,122	1,000	35,824	23,689	59,513
FORTUNA	78,146	63,103	46,904	80,023	3,000	271,175	207,802	478,977
RIO DELL	21,710	17,531	16,497	22,232	1,000	78,971	57,731	136,702
TRINIDAD	2,366	1,910	6,075	2,423	1,000	13,773	6,291	20,064
IMPERIAL COUNTY								
BRAWLEY	176,294	142,357	84,561	180,528	6,000	589,740	468,792	1,058,532
CALEXICO	263,619	212,872	124,069	269,950	6,000	876,511	701,003	1,577,513
CALIPATRIA	49,667	40,106	27,271	50,860	2,000	169,904	132,072	301,976
EL CENTRO	294,308	237,654	137,954	301,377	6,000	977,294	782,611	1,759,906
HOLTVILLE	40,991	33,100	23,345	41,975	2,000	141,411	109,000	250,411
IMPERIAL	128,322	103,620	62,857	131,404	4,000	430,203	341,228	771,431
WESTMORLAND	15,122	12,211	11,642	15,486	1,000	55,462	40,213	95,675
INYO COUNTY								
BISHOP	25,004	20,191	17,017	25,605	1,000	88,818	66,490	155,308

Local Streets and Roads - Projected FY2020-21 Revenues

Based on State Dept of Finance statewide revenue projections

Estimated May 2021

	Highway Users Tax Acct (HUTA) ⁽¹⁾ Streets & Highways Code					TOTAL HUTA	Road Mntnc Rehab Acct	TOTAL
	Sec2103 ⁽⁵⁾	Sec2105 ⁽³⁾	Sec2106 ⁽³⁾	Sec2107 ⁽³⁾	Sec2107.5 ⁽⁴⁾			
KERN COUNTY								
ARVIN	139,732	112,833	49,027	143,088	5,000	449,679	371,568	821,247
BAKERSFIELD	2,531,735	2,044,379	806,125	2,592,543	10,000	7,984,782	6,732,272	14,717,054
CALIFORNIA CITY	91,283	73,711	33,692	93,475	3,000	295,161	242,735	537,897
DELANO	341,906	276,090	113,018	350,118	7,500	1,088,632	909,181	1,997,813
MARICOPA	7,439	6,007	7,154	7,617	1,000	29,217	19,781	48,998
MCFARLAND	92,746	74,893	34,155	94,974	3,000	299,768	246,626	546,394
RIDGECREST	189,192	152,773	64,682	193,736	6,000	606,383	503,091	1,109,475
SHAFTER	131,764	106,400	46,505	134,929	5,000	424,598	350,381	774,979
TAFT	60,123	48,549	23,830	61,567	2,000	196,068	159,875	355,943
TEHACHAPI	92,914	75,028	34,208	95,145	3,000	300,295	247,072	547,367
WASCO	186,188	150,347	63,731	190,660	6,000	596,927	495,104	1,092,031
KINGS COUNTY								
AVENAL	99,946	80,707	37,481	102,347	4,000	324,481	265,773	590,254
CORCORAN	159,946	129,157	57,100	163,788	5,000	514,992	425,322	940,314
HANFORD	382,568	308,924	129,895	391,757	7,500	1,220,644	1,017,307	2,237,951
LEMOORE	170,879	137,985	60,675	174,983	6,000	550,522	454,394	1,004,916
LAKE COUNTY								
CLEARLAKE	98,303	79,380	43,257	100,664	4,000	325,603	261,402	587,005
LAKEPORT	30,638	24,740	16,786	31,374	1,000	104,539	81,472	186,010
LASSEN COUNTY								
SUSANVILLE	115,688	93,418	42,361	201,053	4,000	456,520	307,631	764,151
LOS ANGELES COUNTY								
AGOURA HILLS	132,570	107,050	64,383	135,754	5,000	444,758	352,524	797,282
ALHAMBRA	559,468	451,771	256,251	572,905	7,500	1,847,895	1,487,711	3,335,605
ARCADIA	368,793	297,801	170,552	377,651	7,500	1,222,297	980,677	2,202,974
ARTESIA	106,502	86,001	52,667	109,060	4,000	358,230	283,205	641,435
AVALON	25,327	20,451	16,183	25,935	1,000	88,896	67,347	156,243
AZUSA	320,099	258,481	148,667	327,787	6,000	1,061,035	851,193	1,912,228
BALDWIN PARK	491,526	396,908	225,714	503,332	7,500	1,624,980	1,307,044	2,932,024
BELL	235,482	190,152	110,636	241,137	6,000	783,407	626,182	1,409,589
BELLFLOWER	503,503	406,579	231,097	515,596	7,500	1,664,276	1,338,892	3,003,168
BELL GARDENS	273,629	220,956	127,782	280,202	6,000	908,569	727,623	1,636,192
BEVERLY HILLS	219,869	177,545	103,619	225,150	6,000	732,183	584,666	1,316,849
BRADBURY	6,781	5,476	7,848	6,944	1,000	28,049	18,032	46,082
BURBANK	682,388	551,029	311,497	698,778	10,000	2,253,692	1,814,575	4,068,266
CALABASAS	155,950	125,930	74,891	159,696	5,000	521,466	414,695	936,161
CARSON	600,181	484,647	274,549	614,597	7,500	1,981,474	1,595,974	3,577,448
CERRITOS	322,265	260,230	149,641	330,005	6,000	1,068,141	856,952	1,925,093

Local Streets and Roads - Projected FY2020-21 Revenues

Based on State Dept of Finance statewide revenue projections

Estimated May 2021

	Highway Users Tax Acct (HUTA) ⁽¹⁾ Streets & Highways Code					TOTAL HUTA	Road Mntnc Rehab Acct	TOTAL
	Sec2103 ⁽⁵⁾	Sec2105 ⁽³⁾	Sec2106 ⁽³⁾	Sec2107 ⁽³⁾	Sec2107.5 ⁽⁴⁾			
CLAREMONT	230,815	186,383	108,539	236,358	6,000	768,095	613,772	1,381,866
COMMERCE	82,948	66,981	42,081	84,940	3,000	279,950	220,572	500,522
COMPTON	631,922	510,278	288,815	647,099	7,500	2,085,613	1,680,377	3,765,990
COVINA	314,865	254,254	146,315	322,428	6,000	1,043,861	837,274	1,881,136
CUDAHY	155,815	125,820	74,830	159,557	5,000	521,022	414,335	935,357
CULVER CITY	255,941	206,673	119,832	262,089	6,000	850,535	680,588	1,531,123
DIAMOND BAR	368,567	297,619	170,451	377,420	7,500	1,221,556	980,077	2,201,634
DOWNEY	731,817	590,943	333,712	749,393	10,000	2,415,865	1,946,013	4,361,877
DUARTE	139,706	112,813	67,590	143,061	5,000	468,170	371,499	839,669
EL MONTE	752,096	607,318	342,826	770,160	10,000	2,482,401	1,999,939	4,482,339
EL SEGUNDO	108,146	87,328	53,406	110,743	4,000	363,623	287,576	651,199
GARDENA	392,805	317,190	181,344	402,239	7,500	1,301,078	1,044,528	2,345,606
GLENDALE	1,323,579	1,068,792	599,677	1,355,369	10,000	4,357,418	3,519,600	7,877,018
GLENORA	335,628	271,020	155,647	343,689	7,500	1,113,483	892,486	2,005,969
HAWAIIAN GARDENS	94,429	76,251	47,241	96,697	3,000	317,617	251,100	568,717
HAWTHORNE	560,183	452,349	256,572	573,638	7,500	1,850,242	1,489,614	3,339,856
HERMOSA BEACH	126,433	102,095	61,625	129,470	4,000	423,623	336,206	759,829
HIDDEN HILLS	12,041	9,723	10,212	12,330	1,000	45,307	32,020	77,327
HUNTINGTON PARK	383,638	309,788	177,225	392,853	7,500	1,271,004	1,020,153	2,291,157
INDUSTRY	2,907	2,348	6,107	2,977	1,000	15,338	7,731	23,069
INGLEWOOD	721,774	582,833	329,198	739,109	10,000	2,382,914	1,919,307	4,302,221
IRVINDALE	9,244	7,464	8,955	9,466	1,000	36,128	24,580	60,709
LA CANADA FLINTRIDGE	131,893	106,504	64,079	135,061	5,000	442,537	350,724	793,261
LA HABRA HEIGHTS	35,202	28,426	20,621	36,048	2,000	122,297	93,608	215,904
LAKEWOOD	515,995	416,667	236,712	528,389	7,500	1,705,263	1,372,111	3,077,375
LA MIRADA	315,065	254,415	146,405	322,632	6,000	1,044,517	837,806	1,882,323
LANCASTER	1,042,324	841,678	473,268	1,067,359	10,000	3,434,629	2,771,700	6,206,329
LA PUENTE	261,504	211,165	122,332	267,785	6,000	868,787	695,380	1,564,167
LA VERNE	214,654	173,334	101,276	219,810	6,000	715,073	570,799	1,285,872
LAWNDALE	211,425	170,726	99,824	216,503	6,000	704,478	562,211	1,266,689
LOMITA	132,460	106,962	64,334	135,642	5,000	444,398	352,233	796,631
LONG BEACH	3,043,947	2,457,991	1,372,889	3,117,057	10,000	10,001,884	8,094,322	18,096,205
LOS ANGELES	25,853,172	20,876,471	11,624,403	26,474,120	20,000	84,848,167	68,747,559	153,595,726
LYNWOOD	459,405	370,970	211,278	470,439	7,500	1,519,593	1,221,629	2,741,223
MALIBU	81,511	65,820	41,435	83,468	3,000	275,234	216,749	491,983
MANHATTAN BEACH	227,224	183,484	106,925	232,682	6,000	756,315	604,224	1,360,539
MAYWOOD	179,871	145,246	85,642	184,191	6,000	600,952	478,305	1,079,257
MONROVIA	244,532	197,460	114,704	250,405	6,000	813,101	650,248	1,463,349
MONTEBELLO	409,609	330,760	188,897	419,448	7,500	1,356,214	1,089,214	2,445,429

Local Streets and Roads - Projected FY2020-21 Revenues

Based on State Dept of Finance statewide revenue projections

Estimated May 2021

	Highway Users Tax Acct (HUTA) ⁽¹⁾ Streets & Highways Code					TOTAL HUTA	Road Mntnc Rehab Acct	TOTAL
	Sec2103 ⁽⁵⁾	Sec2105 ⁽³⁾	Sec2106 ⁽³⁾	Sec2107 ⁽³⁾	Sec2107.5 ⁽⁴⁾			
MONTEREY PARK	391,496	316,134	180,756	400,899	7,500	1,296,785	1,041,048	2,337,833
NORWALK	681,460	550,280	311,079	697,827	10,000	2,250,646	1,812,106	4,062,752
PALMDALE	1,010,339	815,850	458,893	1,034,605	10,000	3,329,686	2,686,645	6,016,331
PALOS VERDES ESTATES	86,622	69,948	43,732	88,703	3,000	292,005	230,342	522,347
PARAMOUNT	357,506	288,686	165,480	366,092	7,500	1,185,264	950,663	2,135,927
PASADENA	933,662	753,934	424,431	956,087	10,000	3,078,114	2,482,752	5,560,866
PICO RIVERA	408,514	329,875	188,405	418,325	7,500	1,352,619	1,086,300	2,438,919
POMONA	997,962	805,856	453,330	1,021,931	10,000	3,289,079	2,653,735	5,942,814
RANCHO PALOS VERDES	269,001	217,219	125,701	275,462	6,000	893,384	715,315	1,608,699
REDONDO BEACH	431,848	348,718	198,893	442,221	7,500	1,429,180	1,148,351	2,577,531
ROLLING HILLS ⁽²⁾								
ROLLING HILLS ESTATES	52,000	41,990	28,171	53,249	2,000	177,412	138,277	315,689
ROSEMEAD	350,428	282,971	162,298	358,845	7,500	1,162,042	931,842	2,093,884
SAN DIMAS	218,812	176,691	103,144	224,068	6,000	728,715	581,855	1,310,570
SAN FERNANDO	162,486	131,208	77,829	166,389	6,000	543,912	432,076	975,988
SAN GABRIEL	258,513	208,750	120,988	264,722	6,000	858,974	687,427	1,546,401
SAN MARINO	84,747	68,433	42,889	86,782	3,000	285,851	225,354	511,205
SANTA CLARITA	1,430,590	1,155,204	647,773	1,464,951	10,000	4,708,518	3,804,160	8,512,678
SANTA FE SPRINGS	117,931	95,229	57,804	120,763	4,000	395,727	313,597	709,324
SANTA MONICA	595,340	480,738	272,373	609,639	7,500	1,965,591	1,583,101	3,548,692
SIERRA MADRE	70,372	56,825	36,428	72,062	3,000	238,687	187,129	425,817
SIGNAL HILL	75,496	60,963	38,732	77,310	3,000	255,501	200,757	456,258
SOUTH EL MONTE	136,683	110,371	66,231	139,965	5,000	458,251	363,460	821,711
SOUTH GATE	625,289	504,921	285,833	640,307	7,500	2,063,851	1,662,739	3,726,589
SOUTH PASADENA	165,142	133,352	79,022	169,108	6,000	552,625	439,138	991,763
TEMPLE CITY	233,026	188,169	109,532	238,622	6,000	775,349	619,651	1,395,000
TORRANCE	938,201	757,598	426,470	960,734	10,000	3,093,004	2,494,819	5,587,823
VERNON	1,914	1,546	5,660	1,960	1,000	12,081	5,091	17,172
WALNUT	192,925	155,787	91,509	197,558	6,000	643,779	513,016	1,156,795
WEST COVINA	683,916	552,263	312,183	700,342	10,000	2,258,704	1,818,637	4,077,341
WEST HOLLYWOOD	233,367	188,444	109,686	238,972	6,000	776,470	620,559	1,397,029
WESTLAKE VILLAGE	53,309	43,047	28,760	54,589	2,000	181,705	141,757	323,462
WHITTIER	559,526	451,818	256,277	572,965	7,500	1,848,085	1,487,865	3,335,950

Local Streets and Roads - Projected FY2020-21 Revenues

Based on State Dept of Finance statewide revenue projections

Estimated May 2021

	Highway Users Tax Acct (HUTA) ⁽¹⁾ Streets & Highways Code					TOTAL HUTA	Road Mntnc Rehab Acct	TOTAL
	Sec2103 ⁽⁵⁾	Sec2105 ⁽³⁾	Sec2106 ⁽³⁾	Sec2107 ⁽³⁾	Sec2107.5 ⁽⁴⁾			
MADERA COUNTY								
CHOWCHILLA	120,671	97,442	38,307	123,569	4,000	383,987	320,882	704,869
MADERA	421,670	340,499	121,885	431,798	7,500	1,323,352	1,121,285	2,444,637
MARIN COUNTY								
BELVEDERE	13,691	11,056	11,829	14,020	1,000	51,597	36,408	88,005
CORTE MADERA	65,196	52,646	38,273	66,761	3,000	225,875	173,365	399,241
FAIRFAX	47,965	38,732	29,426	49,117	2,000	167,241	127,547	294,788
LARKSPUR	78,984	63,779	45,352	80,881	3,000	271,996	210,030	482,026
MILL VALLEY	94,590	76,381	53,364	96,862	3,000	324,197	251,529	575,726
NOVATO	346,167	279,530	182,529	354,481	7,500	1,170,208	920,512	2,090,720
ROSS	16,437	13,273	13,239	16,832	1,000	60,782	43,710	104,492
SAN ANSELMO	82,233	66,403	47,020	84,208	3,000	282,863	218,669	501,532
SAN RAFAEL	385,520	311,308	202,734	394,780	7,500	1,301,843	1,025,158	2,327,001
SAUSALITO	46,747	37,748	28,801	47,870	2,000	163,166	124,307	287,473
TIBURON	61,496	49,658	36,373	62,973	2,000	212,499	163,526	376,025
MARIPOSA COUNTY								
MENDOCINO COUNTY								
FORT BRAGG	47,875	38,659	29,775	49,025	2,000	167,334	127,307	294,641
POINT ARENA	2,907	2,348	6,317	2,977	1,000	15,548	7,731	23,279
UKIAH	103,621	83,674	58,855	106,109	4,000	356,259	275,543	631,803
WILLITS	32,694	26,401	21,856	33,480	2,000	116,431	86,940	203,370
MERCED COUNTY								
ATWATER	202,265	163,329	75,918	207,123	6,000	654,635	537,854	1,192,489
DOS PALOS	35,750	28,868	17,370	36,609	2,000	120,597	95,065	215,661
GUSTINE	37,871	30,581	18,116	38,780	2,000	127,347	100,704	228,051
LIVINGSTON	97,026	78,349	38,915	99,357	4,000	317,647	258,008	575,655
LOS BANOS	270,239	218,218	99,818	276,729	6,000	871,004	718,607	1,589,611
MERCED	568,028	458,684	204,523	581,671	7,500	1,820,406	1,510,474	3,330,880
MODOC COUNTY								
ALTURAS	18,223	14,715	11,514	20,142	1,000	65,594	48,458	114,052
MONO COUNTY								
MAMMOTH LAKES	53,077	42,860	53,139	1,906,370	2,000	2,057,445	141,140	2,198,585

Local Streets and Roads - Projected FY2020-21 Revenues

Based on State Dept of Finance statewide revenue projections

Estimated May 2021

	Highway Users Tax Acct (HUTA) ⁽¹⁾ Streets & Highways Code					TOTAL HUTA	Road Mntnc Rehab Acct	TOTAL
	Sec2103 ⁽⁵⁾	Sec2105 ⁽³⁾	Sec2106 ⁽³⁾	Sec2107 ⁽³⁾	Sec2107.5 ⁽⁴⁾			
MONTEREY COUNTY								
CARMEL-BY-THE-SEA	25,456	20,555	13,377	26,067	1,000	86,455	67,690	154,145
DEL REY OAKS	10,713	8,651	8,410	10,971	1,000	39,745	28,489	68,233
GONZALES	54,830	44,276	23,274	56,147	2,000	180,528	145,802	326,330
GREENFIELD	117,860	95,172	44,512	120,691	4,000	382,235	313,408	695,643
KING CITY	95,383	77,022	36,938	97,674	3,000	310,016	253,637	563,653
MARINA	161,210	130,177	59,118	165,082	6,000	521,587	428,682	950,269
MONTEREY	181,586	146,631	65,983	185,947	6,000	586,148	482,865	1,069,013
PACIFIC GROVE	98,399	79,458	37,955	100,763	4,000	320,574	261,659	582,233
SALINAS	1,045,695	844,400	357,136	1,070,811	10,000	3,328,042	2,780,664	6,108,707
SAND CITY	2,482	2,004	5,636	2,541	1,000	13,663	6,599	20,263
SEASIDE	216,182	174,567	77,640	221,374	6,000	695,764	574,861	1,270,625
SOLEDAD	165,909	133,972	60,701	169,894	6,000	536,476	441,178	977,654
NAPA COUNTY								
AMERICAN CANYON	134,317	108,461	54,136	137,543	5,000	439,457	357,169	796,626
CALISTOGA	34,474	27,837	17,463	35,302	2,000	117,075	91,671	208,746
NAPA	511,032	412,659	192,508	523,306	7,500	1,647,005	1,358,913	3,005,917
SAINT HELENA	39,147	31,611	19,179	40,087	2,000	132,025	104,098	236,123
YOUNTVILLE	18,906	15,267	11,745	19,360	1,000	66,278	50,275	116,553
NEVADA COUNTY								
GRASS VALLEY	82,929	66,965	94,214	84,921	3,000	332,028	220,520	552,549
NEVADA CITY	20,241	16,344	26,624	20,727	1,000	84,935	53,823	138,758
TRUCKEE	104,607	84,470	117,587	1,717,042	4,000	2,027,707	278,166	2,305,873

Local Streets and Roads - Projected FY2020-21 Revenues

Based on State Dept of Finance statewide revenue projections

Estimated May 2021

	Highway Users Tax Acct (HUTA) ⁽¹⁾ Streets & Highways Code					TOTAL HUTA	Road Mntnc Rehab Acct	TOTAL
	Sec2103 ⁽⁵⁾	Sec2105 ⁽³⁾	Sec2106 ⁽³⁾	Sec2107 ⁽³⁾	Sec2107.5 ⁽⁴⁾			
ORANGE COUNTY								
ALISO VIEJO	322,587	260,490	162,178	330,335	7,500	1,083,090	857,809	1,940,900
ANAHEIM	2,303,344	1,859,953	1,128,511	2,358,666	10,000	7,660,474	6,124,946	13,785,420
BREA	294,128	237,509	148,293	301,192	6,000	987,123	782,132	1,769,254
BUENA PARK	528,565	426,817	262,666	541,261	7,500	1,766,809	1,405,536	3,172,346
COSTA MESA	739,868	597,444	365,752	757,638	10,000	2,470,702	1,967,422	4,438,124
CYPRESS	317,611	256,471	159,750	325,239	6,000	1,065,072	844,577	1,909,648
DANA POINT	214,983	173,599	109,682	220,147	6,000	724,411	571,673	1,296,084
FOUNTAIN VALLEY	360,194	290,857	180,524	368,845	7,500	1,207,920	957,811	2,165,731
FULLERTON	914,460	738,427	450,929	936,423	10,000	3,050,239	2,431,689	5,481,928
GARDEN GROVE	1,126,780	909,877	554,512	1,153,844	10,000	3,755,013	2,996,282	6,751,295
HUNTINGTON BEACH	1,297,473	1,047,711	637,786	1,328,636	10,000	4,321,605	3,450,179	7,771,783
IRVINE	1,815,905	1,466,345	890,708	1,859,519	10,000	6,042,478	4,828,769	10,871,247
LAGUNA BEACH	146,474	118,278	76,259	149,992	5,000	496,003	389,497	885,501
LAGUNA HILLS	203,103	164,006	103,886	207,981	6,000	684,976	540,082	1,225,058
LAGUNA NIGUEL	421,032	339,984	210,205	431,144	7,500	1,409,865	1,119,588	2,529,453
LAGUNA WOODS	104,897	84,704	55,975	107,416	4,000	356,993	278,937	635,930
LA HABRA	408,494	329,860	204,088	418,306	7,500	1,368,248	1,086,249	2,454,497
LAKE FOREST	546,054	440,939	271,198	559,169	7,500	1,824,859	1,452,040	3,276,899
LA PALMA	100,353	81,035	53,758	102,763	4,000	341,908	266,853	608,761
LOS ALAMITOS	74,562	60,209	41,176	76,353	3,000	255,299	198,271	453,570
MISSION VIEJO	607,652	490,680	301,250	622,247	7,500	2,029,329	1,615,841	3,645,169
NEWPORT BEACH	552,944	446,503	274,560	566,225	7,500	1,847,733	1,470,364	3,318,097
ORANGE	902,870	729,068	445,274	924,555	10,000	3,011,767	2,400,869	5,412,636
PLACENTIA	331,934	268,037	166,738	339,907	7,500	1,114,116	882,664	1,996,780
RANCHO SANTA MARGARITA	314,523	253,978	158,244	322,078	6,000	1,054,823	836,366	1,891,189
SAN CLEMENTE	416,294	336,158	207,893	426,293	7,500	1,394,138	1,106,990	2,501,128
SAN JUAN CAPISTRANO	234,109	189,043	119,012	239,731	6,000	787,895	622,531	1,410,426
SANTA ANA	2,159,771	1,744,018	1,058,467	2,211,644	10,000	7,183,899	5,743,162	12,927,061
SEAL BEACH	161,100	130,089	83,394	164,970	5,000	544,553	428,391	972,944
STANTON	251,893	203,404	127,689	257,943	6,000	846,930	669,823	1,516,753
TUSTIN	518,148	418,406	257,584	530,593	7,500	1,732,232	1,377,836	3,110,068
VILLA PARK	37,465	30,253	23,077	38,364	2,000	131,159	99,624	230,783
WESTMINSTER	595,753	481,071	295,444	610,062	7,500	1,989,830	1,584,198	3,574,028
YORBA LINDA	442,523	357,338	220,690	453,152	7,500	1,481,202	1,176,737	2,657,939

Local Streets and Roads - Projected FY2020-21 Revenues

Based on State Dept of Finance statewide revenue projections

Estimated May 2021

	Highway Users Tax Acct (HUTA) ⁽¹⁾ Streets & Highways Code					TOTAL HUTA	Road Mntnc Rehab Acct	TOTAL
	Sec2103 ⁽⁵⁾	Sec2105 ⁽³⁾	Sec2106 ⁽³⁾	Sec2107 ⁽³⁾	Sec2107.5 ⁽⁴⁾			
PLACER COUNTY								
AUBURN	94,074	75,965	52,559	96,334	3,000	321,932	250,157	572,089
COLFAX	13,872	11,202	11,842	14,205	1,000	52,121	36,888	89,009
LINCOLN	317,901	256,706	166,191	325,537	6,000	1,072,334	845,348	1,917,682
LOOMIS	44,401	35,854	27,341	45,467	2,000	155,062	118,068	273,130
ROCKLIN	453,481	366,187	235,022	464,373	7,500	1,526,564	1,205,877	2,732,441
ROSEVILLE	935,732	755,605	479,850	958,206	10,000	3,139,392	2,488,254	5,627,647
PLUMAS COUNTY								
PORTOLA	13,563	10,952	8,377	127,438	1,000	161,330	36,065	197,394
RIVERSIDE COUNTY								
BANNING	200,634	162,012	102,287	205,453	6,000	676,386	533,517	1,209,903
BEAUMONT	331,812	267,938	166,025	339,781	7,500	1,113,056	882,338	1,995,395
BLYTHE	134,188	108,357	70,001	137,411	5,000	454,957	356,826	811,783
CALIMESA	60,135	48,559	34,019	61,580	2,000	206,294	159,909	366,203
CANYON LAKE	70,907	57,257	39,253	72,610	3,000	243,027	188,552	431,579
CATHEDRAL CITY	345,381	278,895	172,618	353,676	7,500	1,158,070	918,420	2,076,491
COACHELLA	304,165	245,613	152,591	311,470	6,000	1,019,839	808,820	1,828,659
CORONA	1,084,539	875,767	531,770	1,110,588	10,000	3,612,664	2,883,957	6,496,621
DESERT HOT SPRINGS	191,191	154,387	97,698	195,783	6,000	645,058	508,405	1,153,463
EASTVALE	428,103	345,694	212,812	438,386	7,500	1,432,495	1,138,392	2,570,887
HEMET	549,044	443,354	271,577	562,232	7,500	1,833,707	1,459,994	3,293,701
INDIAN WELLS	34,828	28,124	21,723	35,665	2,000	122,339	92,613	214,953
INDIO	584,988	472,378	289,041	599,038	7,500	1,952,946	1,555,572	3,508,518
JURUPA VALLEY	690,265	557,390	340,195	706,844	10,000	2,304,694	1,835,521	4,140,215
LAKE ELSINORE	409,023	330,286	203,541	418,847	7,500	1,369,197	1,087,655	2,456,852
LA QUINTA	262,097	211,644	132,151	268,393	6,000	880,285	696,957	1,577,243
MENIFEE	625,869	505,390	308,905	640,901	7,500	2,088,565	1,664,281	3,752,846
MORENO VALLEY	1,346,186	1,087,047	658,901	1,378,519	10,000	4,480,652	3,579,714	8,060,366
MURRIETA	744,915	601,520	366,749	762,806	10,000	2,485,990	1,980,843	4,466,833
NORCO	177,680	143,477	91,133	181,947	6,000	600,237	472,477	1,072,714
PALM DESERT	341,552	275,804	170,757	349,755	7,500	1,145,368	908,239	2,053,607
PALM SPRINGS	305,718	246,868	153,346	313,061	6,000	1,024,993	812,951	1,837,944
PERRIS	516,982	417,463	255,998	529,399	7,500	1,727,341	1,374,734	3,102,075
RANCHO MIRAGE	123,210	99,492	64,667	126,170	4,000	417,539	327,635	745,174
RIVERSIDE	2,115,312	1,708,117	1,032,614	2,166,118	10,000	7,032,161	5,624,940	12,657,101
SAN JACINTO	328,930	265,612	164,625	336,831	7,500	1,103,498	874,676	1,978,174
TEMECULA	721,767	582,828	355,501	739,103	10,000	2,409,199	1,919,290	4,328,488
WILDOMAR	239,684	193,545	121,261	245,441	6,000	805,932	637,358	1,443,290

Local Streets and Roads - Projected FY2020-21 Revenues

Based on State Dept of Finance statewide revenue projections

Estimated May 2021

	Highway Users Tax Acct (HUTA) ⁽¹⁾ Streets & Highways Code					TOTAL HUTA	Road Mntnc Rehab Acct	TOTAL
	Sec2103 ⁽⁵⁾	Sec2105 ⁽³⁾	Sec2106 ⁽³⁾	Sec2107 ⁽³⁾	Sec2107.5 ⁽⁴⁾			
SACRAMENTO COUNTY								
CITRUS HEIGHTS	566,036	457,075	304,056	579,632	7,500	1,914,299	1,505,178	3,419,477
ELK GROVE	1,135,502	916,919	605,125	1,162,775	10,000	3,830,321	3,019,474	6,849,795
FOLSOM	526,064	424,798	282,923	538,699	7,500	1,779,984	1,398,886	3,178,870
GALT	166,625	134,550	92,892	170,627	6,000	570,693	443,080	1,013,774
ISLETON	5,337	4,310	7,622	5,466	1,000	23,735	14,193	37,927
RANCHO CORDOVA	505,250	407,990	271,919	517,385	7,500	1,710,044	1,343,537	3,053,581
SACRAMENTO	3,293,500	2,659,506	1,746,030	3,372,604	20,000	11,091,639	8,757,922	19,849,562
SAN BENITO COUNTY								
HOLLISTER	262,007	211,571	127,492	268,300	6,000	875,370	696,717	1,572,088
SAN JUAN BAUTISTA	13,614	10,993	11,175	13,941	1,000	50,724	36,202	86,926
SAN BERNARDINO COUNTY								
ADELANTO	229,886	185,634	116,430	235,408	6,000	773,358	611,303	1,384,661
APPLE VALLEY	479,549	387,237	237,663	491,067	7,500	1,603,016	1,275,195	2,878,212
BARSTOW	156,433	126,320	80,762	160,191	5,000	528,706	415,980	944,686
BIG BEAR LAKE	33,558	27,098	21,095	409,890	2,000	493,642	89,237	582,879
CHINO	574,403	463,831	283,723	588,200	7,500	1,917,657	1,527,427	3,445,084
CHINO HILLS	531,215	428,957	262,751	543,973	7,500	1,774,395	1,412,581	3,186,977
COLTON	348,849	281,696	174,196	357,227	7,500	1,169,468	927,642	2,097,111
FONTANA	1,373,014	1,108,711	671,517	1,405,991	10,000	4,569,234	3,651,056	8,220,289
GRAND TERRACE	80,099	64,680	43,695	82,023	3,000	273,497	212,995	486,492
HESPERIA	621,357	501,746	306,522	636,280	7,500	2,073,406	1,652,283	3,725,688
HIGHLAND	356,616	287,968	177,968	365,182	7,500	1,195,234	948,297	2,143,531
LOMA LINDA	158,154	127,710	81,598	161,953	5,000	534,415	420,557	954,972
MONTCLAIR	254,556	205,554	128,409	260,670	6,000	855,188	676,902	1,532,090
NEEDLES	33,829	27,317	21,227	34,642	2,000	119,014	89,957	208,971
ONTARIO	1,178,800	951,883	577,210	1,207,113	10,000	3,925,006	3,134,611	7,059,617
RANCHO CUCAMONGA	1,131,428	913,630	554,206	1,158,603	10,000	3,767,867	3,008,641	6,776,508
REDLANDS	457,362	369,320	226,889	468,347	7,500	1,529,418	1,216,196	2,745,614
RIALTO	673,957	544,221	332,064	690,144	10,000	2,250,385	1,792,154	4,042,539
SAN BERNARDINO	1,404,896	1,134,456	686,999	1,438,640	10,000	4,674,990	3,735,835	8,410,826
TWENTYNINE PALMS	188,599	152,294	96,381	193,129	6,000	636,404	501,514	1,137,918
UPLAND	508,041	410,244	251,498	520,243	7,500	1,697,526	1,350,959	3,048,485
VICTORVILLE	814,990	658,106	400,548	834,565	10,000	2,718,209	2,167,184	4,885,393
YUCAIPA	359,124	289,993	179,186	367,749	7,500	1,203,552	954,965	2,158,517
YUCCA VALLEY	143,335	115,743	74,402	146,778	5,000	485,257	381,150	866,407

Local Streets and Roads - Projected FY2020-21 Revenues

Based on State Dept of Finance statewide revenue projections

Estimated May 2021

	Highway Users Tax Acct (HUTA) ⁽¹⁾ Streets & Highways Code					TOTAL HUTA	Road Mntnc Rehab Acct	TOTAL
	Sec2103 ⁽⁵⁾	Sec2105 ⁽³⁾	Sec2106 ⁽³⁾	Sec2107 ⁽³⁾	Sec2107.5 ⁽⁴⁾			
SAN DIEGO COUNTY								
CARLSBAD	737,837	595,804	375,046	755,559	10,000	2,474,246	1,962,022	4,436,269
CHULA VISTA	1,754,635	1,416,870	885,274	1,796,778	10,000	5,863,557	4,665,843	10,529,400
CORONADO	159,199	128,553	84,686	163,022	5,000	540,460	423,334	963,794
DEL MAR	27,512	22,216	18,605	28,173	1,000	97,506	73,158	170,664
EL CAJON	672,925	543,388	342,473	689,088	10,000	2,257,874	1,789,411	4,047,286
ENCINITAS	400,836	323,676	205,939	410,464	7,500	1,348,415	1,065,885	2,414,301
ESCONDIDO	986,301	796,439	499,725	1,009,990	10,000	3,302,456	2,622,726	5,925,182
IMPERIAL BEACH	180,845	146,032	95,548	185,188	6,000	613,613	480,894	1,094,507
LA MESA	386,545	312,136	198,768	395,830	7,500	1,300,779	1,027,884	2,328,663
LEMON GROVE	170,989	138,074	90,602	175,095	6,000	580,760	454,685	1,035,444
NATIONAL CITY	400,295	323,239	205,668	409,909	7,500	1,346,610	1,064,446	2,411,056
OCEANSIDE	1,143,115	923,067	578,414	1,170,570	10,000	3,825,166	3,039,718	6,864,884
POWAY	318,036	256,815	164,390	325,675	6,000	1,070,917	845,708	1,916,625
SAN DIEGO	9,221,040	7,446,002	4,631,911	9,442,513	20,000	30,761,467	24,520,163	55,281,630
SAN MARCOS	626,617	505,994	319,236	641,667	7,500	2,101,013	1,666,270	3,767,283
SANTEE	373,866	301,897	192,406	382,846	7,500	1,258,514	994,167	2,252,681
SOLANA BEACH	89,201	72,030	49,561	91,343	3,000	305,135	237,199	542,333
VISTA	663,482	535,762	337,735	679,417	10,000	2,226,396	1,764,300	3,990,696
SAN FRANCISCO COUNTY								
SAN FRANCISCO	5,787,325	4,673,273	1,747,828	5,926,327	20,000	18,154,753	15,389,388	33,544,141
SAN JOAQUIN COUNTY								
ESCALON	48,204	38,925	27,184	49,362	2,000	165,674	128,181	293,855
LATHROP	172,968	139,672	85,121	177,122	6,000	580,882	459,947	1,040,829
LODI	437,882	353,590	208,138	448,399	7,500	1,455,509	1,164,395	2,619,905
MANTECA	546,627	441,402	258,636	559,756	7,500	1,813,922	1,453,566	3,267,487
RIPON	102,686	82,919	52,484	105,152	4,000	347,241	273,058	620,299
STOCKTON	2,053,217	1,657,975	958,247	2,102,532	10,000	6,781,971	5,459,819	12,241,790
TRACY	618,378	499,341	291,955	633,231	7,500	2,050,406	1,644,363	3,694,769
SAN LUIS OBISPO COUNTY								
ARROYO GRANDE	114,012	92,065	70,283	116,750	4,000	397,109	303,175	700,284
ATASCADERO	193,750	156,453	116,080	198,403	6,000	670,686	515,210	1,185,896
EL PASO DE ROBLES	201,253	162,512	120,390	206,087	6,000	696,241	535,162	1,231,404
GROVER BEACH	85,178	68,782	53,722	87,224	3,000	297,907	226,503	524,409
MORRO BAY	65,969	53,270	42,689	67,554	3,000	232,482	175,422	407,904
PISMO BEACH	52,465	42,365	34,933	53,725	2,000	185,488	139,511	324,999
SAN LUIS OBISPO	296,004	239,023	174,810	303,113	6,000	1,018,950	787,120	1,806,070

Local Streets and Roads - Projected FY2020-21 Revenues

Based on State Dept of Finance statewide revenue projections

Estimated May 2021

	Highway Users Tax Acct (HUTA) ⁽¹⁾ Streets & Highways Code					TOTAL HUTA	Road Mntnc Rehab Acct	TOTAL
	Sec2103 ⁽⁵⁾	Sec2105 ⁽³⁾	Sec2106 ⁽³⁾	Sec2107 ⁽³⁾	Sec2107.5 ⁽⁴⁾			
SAN MATEO COUNTY								
ATHERTON	45,322	36,598	27,110	46,411	2,000	157,441	120,519	277,960
BELMONT	172,839	139,567	89,880	176,990	6,000	585,276	459,604	1,044,881
BRISBANE	29,865	24,116	19,501	30,582	1,000	105,063	79,415	184,478
BURLINGAME	194,143	156,771	100,367	198,806	6,000	656,087	516,256	1,172,342
COLMA	11,145	9,000	10,286	11,413	1,000	42,844	29,637	72,481
DALY CITY	703,538	568,108	351,118	720,435	10,000	2,353,198	1,870,815	4,224,013
EAST PALO ALTO	198,500	160,289	102,512	203,268	6,000	670,570	527,843	1,198,413
FOSTER CITY	212,933	171,944	109,617	218,047	6,000	718,541	566,222	1,284,763
HALF MOON BAY	80,131	64,706	44,245	82,056	3,000	274,138	213,081	487,219
HILLSBOROUGH	73,601	59,433	41,030	75,369	3,000	252,434	195,717	448,151
MENLO PARK	227,250	183,505	116,664	232,708	6,000	766,127	604,293	1,370,419
MILLBRAE	147,177	118,845	77,248	150,712	5,000	498,982	391,366	890,348
PACIFICA	247,085	199,521	126,428	253,019	6,000	832,052	657,036	1,489,088
PORTOLA VALLEY	29,697	23,980	19,418	30,410	1,000	104,506	78,969	183,475
REDWOOD CITY	559,223	451,573	280,078	572,654	7,500	1,871,029	1,487,059	3,358,088
SAN BRUNO	293,000	236,598	149,030	300,037	6,000	984,665	779,132	1,763,797
SAN CARLOS	194,317	156,911	100,453	198,984	6,000	656,665	516,719	1,173,384
SAN MATEO	664,507	536,590	331,905	680,467	10,000	2,223,468	1,767,025	3,990,493
SOUTH SAN FRANCISCO	437,553	353,325	220,186	448,062	7,500	1,466,627	1,163,521	2,630,148
WOODSIDE	36,588	29,545	22,810	37,467	2,000	128,410	97,293	225,703
SANTA BARBARA COUNTY								
BUELLTON	35,221	28,441	19,089	36,067	2,000	120,819	93,659	214,478
CARPINTERIA	85,958	69,412	39,674	88,023	3,000	286,067	228,577	514,643
GOLETA	207,712	167,728	89,069	212,701	6,000	683,210	552,338	1,235,547
GUADALUPE	52,091	42,063	25,933	53,342	2,000	175,429	138,517	313,947
LOMPOC	282,248	227,916	119,309	289,027	6,000	924,499	750,540	1,675,040
SANTA BARBARA	602,779	486,745	249,349	617,257	7,500	1,963,630	1,602,882	3,566,512
SANTA MARIA	692,354	559,076	285,690	708,983	10,000	2,256,103	1,841,075	4,097,178
SOLVANG	35,853	28,951	19,346	36,714	2,000	122,864	95,339	218,203

Local Streets and Roads - Projected FY2020-21 Revenues

Based on State Dept of Finance statewide revenue projections

Estimated May 2021

	Highway Users Tax Acct (HUTA) ⁽¹⁾ Streets & Highways Code					TOTAL HUTA	Road Mntnc Rehab Acct	TOTAL
	Sec2103 ⁽⁵⁾	Sec2105 ⁽³⁾	Sec2106 ⁽³⁾	Sec2107 ⁽³⁾	Sec2107.5 ⁽⁴⁾			
SANTA CLARA COUNTY								
CAMPBELL	272,592	220,118	132,062	279,139	6,000	909,911	724,863	1,634,774
CUPERTINO	383,857	309,965	184,008	393,077	7,500	1,278,408	1,020,736	2,299,143
GILROY	367,968	297,134	176,590	376,806	7,500	1,225,998	978,483	2,204,481
LOS ALTOS	199,029	160,716	97,719	203,809	6,000	667,274	529,249	1,196,522
LOS ALTOS HILLS	54,231	43,791	30,118	55,533	2,000	185,674	144,208	329,882
LOS GATOS	202,658	163,647	99,413	207,526	6,000	679,244	538,899	1,218,143
MILPITAS	502,543	405,804	239,418	514,613	7,500	1,669,877	1,336,338	3,006,214
MONTE SERENO	23,167	18,708	15,616	23,724	1,000	82,214	61,605	143,819
MORGAN HILL	299,446	241,803	144,600	306,638	6,000	998,487	796,273	1,794,760
MOUNTAIN VIEW	530,332	428,243	252,391	543,069	7,500	1,761,535	1,410,233	3,171,768
PALO ALTO	446,236	360,336	213,130	456,954	7,500	1,484,156	1,186,610	2,670,767
SAN JOSE	6,763,139	5,461,244	3,162,248	6,925,577	20,000	22,332,208	17,984,225	40,316,433
SANTA CLARA	832,214	672,014	393,329	852,202	10,000	2,759,759	2,212,985	4,972,745
SARATOGA	200,022	161,518	98,182	204,826	6,000	670,548	531,889	1,202,436
SUNNYVALE	1,008,830	814,632	475,784	1,033,061	10,000	3,342,306	2,682,634	6,024,941
SANTA CRUZ COUNTY								
CAPITOLA	65,157	52,614	34,003	66,722	3,000	221,496	173,262	394,759
SANTA CRUZ	415,282	335,341	190,929	425,256	7,500	1,374,308	1,104,299	2,478,607
SCOTTS VALLEY	75,374	60,865	38,583	77,184	3,000	255,005	200,431	455,436
WATSONVILLE	332,070	268,147	153,633	340,045	7,500	1,101,395	883,024	1,984,419
SHASTA COUNTY								
ANDERSON	68,786	55,545	48,454	70,438	3,000	246,223	182,913	429,136
REDDING	591,382	477,542	380,111	605,586	7,500	2,062,121	1,572,576	3,634,698
SHASTA LAKE	68,696	55,472	48,397	70,346	3,000	245,910	182,673	428,583
SIERRA COUNTY								
LOYALTON	5,034	4,065	5,991	21,410	1,000	37,501	13,387	50,888
SISKIYOU COUNTY								
DORRIS	6,420	5,184	8,511	6,574	1,000	27,690	17,073	44,763
DUNSMUIR	10,636	8,589	10,948	36,749	1,000	67,922	28,283	96,205
ETNA	4,802	3,878	7,576	4,918	1,000	22,174	12,770	34,944
FORT JONES	4,577	3,696	7,445	4,687	1,000	21,404	12,170	33,575
MONTAGUE	9,302	7,511	10,176	9,525	1,000	37,514	24,735	62,249
MOUNT SHASTA	21,878	17,666	17,445	90,839	1,000	148,829	58,177	207,006
TULELAKE	6,511	5,257	8,563	6,667	1,000	27,998	17,313	45,310
WEED	19,126	15,444	15,854	19,585	1,000	71,009	50,858	121,866
YREKA	50,189	40,528	33,809	52,061	2,000	178,587	133,461	312,047

Local Streets and Roads - Projected FY2020-21 Revenues

Based on State Dept of Finance statewide revenue projections

Estimated May 2021

	Highway Users Tax Acct (HUTA) ⁽¹⁾ Streets & Highways Code					TOTAL HUTA	Road Mntnc Rehab Acct	TOTAL
	Sec2103 ⁽⁵⁾	Sec2105 ⁽³⁾	Sec2106 ⁽³⁾	Sec2107 ⁽³⁾	Sec2107.5 ⁽⁴⁾			
SOLANO COUNTY								
BENICIA	175,172	141,452	96,726	179,379	6,000	598,730	465,810	1,064,539
DIXON	128,741	103,959	72,360	131,833	4,000	440,893	342,342	783,235
FAIRFIELD	754,068	608,911	400,519	772,180	10,000	2,545,678	2,005,184	4,550,862
RIO VISTA	64,377	51,984	38,584	65,923	2,000	222,868	171,188	394,056
SUISUN CITY	187,703	151,571	103,303	192,212	6,000	640,788	499,132	1,139,920
VACAVILLE	637,227	514,562	339,203	652,532	7,500	2,151,023	1,694,484	3,845,507
VALLEJO	767,489	619,748	407,561	785,923	10,000	2,590,722	2,040,871	4,631,593
SONOMA COUNTY								
CLOVERDALE	59,388	47,956	34,676	60,814	2,000	204,833	157,921	362,754
COTATI	48,558	39,211	29,228	49,725	2,000	168,722	129,124	297,845
HEALDSBURG	77,927	62,926	44,002	79,798	3,000	267,653	207,219	474,871
PETALUMA	398,838	322,062	205,440	408,417	7,500	1,342,257	1,060,572	2,402,829
ROHNERT PARK	277,626	224,183	144,463	284,294	6,000	936,566	738,250	1,674,817
SANTA ROSA	1,119,219	903,771	567,835	1,146,101	10,000	3,746,926	2,976,176	6,723,102
SEBASTOPOL	49,925	40,314	29,915	51,124	2,000	173,278	132,758	306,036
SONOMA	71,229	57,518	40,633	72,940	3,000	245,319	189,409	434,728
WINDSOR	182,089	147,037	96,402	186,462	6,000	617,990	484,202	1,102,191
STANISLAUS COUNTY								
CERES	312,183	252,089	148,770	319,682	6,000	1,038,723	830,144	1,868,867
HUGHSON	47,043	37,988	26,495	48,173	2,000	161,700	125,096	286,795
MODESTO	1,433,188	1,157,301	665,744	1,467,611	10,000	4,733,844	3,811,068	8,544,912
NEWMAN	76,786	62,005	40,211	78,630	3,000	260,631	204,185	464,816
OAKDALE	148,240	119,704	73,164	151,801	5,000	497,910	394,194	892,104
PATTERSON	148,737	120,105	73,393	152,309	5,000	499,544	395,514	895,058
RIVERBANK	161,345	130,287	79,208	165,221	6,000	542,060	429,042	971,102
TURLOCK	478,924	386,732	225,666	490,427	7,500	1,589,248	1,273,533	2,862,781
WATERFORD	57,331	46,295	31,240	58,708	2,000	195,575	152,453	348,028
SUTTER COUNTY								
LIVE OAK	59,304	47,888	31,850	60,728	2,000	201,771	157,698	359,469
YUBA CITY	454,178	366,749	211,965	465,086	7,500	1,505,478	1,207,728	2,713,206
TEHAMA COUNTY								
CORNING	49,396	39,888	28,009	50,583	2,000	169,876	131,352	301,228
RED BLUFF	91,824	74,148	47,945	94,030	3,000	310,947	244,175	555,122
TEHAMA	2,869	2,316	6,148	2,937	1,000	15,270	7,628	22,898
TRINITY COUNTY								

Local Streets and Roads - Projected FY2020-21 Revenues

Based on State Dept of Finance statewide revenue projections

Estimated May 2021

	Highway Users Tax Acct (HUTA) ⁽¹⁾ Streets & Highways Code					TOTAL HUTA	Road Mntnc Rehab Acct	TOTAL
	Sec2103 ⁽⁵⁾	Sec2105 ⁽³⁾	Sec2106 ⁽³⁾	Sec2107 ⁽³⁾	Sec2107.5 ⁽⁴⁾			
TULARE COUNTY								
DINUBA	167,559	135,304	76,555	171,584	6,000	557,003	445,566	1,002,569
EXETER	71,100	57,414	35,248	72,808	3,000	239,570	189,066	428,636
FARMERSVILLE	73,479	59,334	36,266	75,244	3,000	247,323	195,391	442,715
LINDSAY	84,792	68,469	41,111	86,828	3,000	284,200	225,474	509,674
PORTERVILLE	384,541	310,517	169,475	393,777	7,500	1,265,810	1,022,553	2,288,362
TULARE	437,263	353,091	192,053	447,765	7,500	1,437,672	1,162,750	2,600,422
VISALIA	893,742	721,698	387,535	915,208	10,000	2,928,183	2,376,597	5,304,780
WOODLAKE	50,105	40,460	26,257	51,309	2,000	170,131	133,238	303,369
TUOLUMNE COUNTY								
SONORA	31,605	25,521	28,593	32,364	1,000	119,084	84,043	203,126
VENTURA COUNTY								
CAMARILLO	452,908	365,724	233,901	463,786	7,500	1,523,818	1,204,351	2,728,169
FILLMORE	100,340	81,024	55,556	102,750	4,000	343,670	266,818	610,488
MOORPARK	233,851	188,835	123,092	239,467	6,000	791,245	621,845	1,413,090
OJAI	48,713	39,336	29,441	49,883	2,000	169,373	129,535	298,908
OXNARD	1,330,161	1,074,106	677,655	1,362,109	10,000	4,454,031	3,537,101	7,991,132
PORT HUENEME	152,173	122,880	81,776	155,827	5,000	517,655	404,650	922,305
SAN BUENAVENTURA	686,075	554,007	351,848	702,553	10,000	2,304,483	1,824,379	4,128,862
SANTA PAULA	195,890	158,181	103,890	200,595	6,000	664,556	520,901	1,185,457
SIMI VALLEY	806,501	651,250	412,764	825,871	10,000	2,706,387	2,144,609	4,850,997
THOUSAND OAKS	816,608	659,412	417,877	836,222	10,000	2,740,119	2,171,487	4,911,606
YOLO COUNTY								
DAVIS	445,959	360,112	218,241	456,670	7,500	1,488,482	1,185,873	2,674,355
WEST SACRAMENTO	350,202	282,789	172,411	358,614	7,500	1,171,516	931,242	2,102,758
WINTERS	46,921	37,889	27,257	48,048	2,000	162,115	124,770	286,885
WOODLAND	391,548	316,175	192,199	400,952	7,500	1,308,373	1,041,185	2,349,558
YUBA COUNTY								
MARYSVILLE	80,086	64,670	38,640	82,010	3,000	268,405	212,961	481,366
WHEATLAND	23,470	18,952	14,717	24,034	1,000	82,173	62,411	144,584
Statewide Total	\$ 214,695,000	\$ 173,366,500	\$ 101,659,252	\$ 225,075,500	\$ 2,709,500	\$ 717,505,752	\$ 570,907,000	\$ 1,288,412,752

Notes:

1. The Highway Users Tax is also known as the "Motor Vehicle Fuel Tax", the "Gasoline Excise Tax" and "Article XIX Revenues."
2. Rolling Hills has no public streets and is therefore not eligible for HUTA or RMRA allocations.
3. Str&HwysCode §§ 2103, 2105, 2106, 2107 and RMRA amounts are paid monthly. Includes special payments for snow removal.
4. Str&HwysCode § 2107.5 amounts are typically paid by the State Controller once per year in July.
5. Str&HwysCode § 2103 allocations replace the former Prop42 TCRF revenues. Previously adjusted annually by the BOE until July 2019.

Local Streets and Roads - Projected FY2021-22 Revenues

Based on State Dept of Finance statewide revenue projections

Estimated May 2021

	Highway Users Tax Acct (HUTA) ⁽¹⁾ Streets & Highways Code					TOTAL HUTA	Road Mntnc Rehab Acct	TOTAL
	Sec2103 ⁽⁵⁾	Sec2105 ⁽³⁾	Sec2106 ⁽³⁾	Sec2107 ⁽³⁾	Sec2107.5 ⁽⁴⁾			
ALAMEDA COUNTY								
ALAMEDA	626,595	460,300	264,247	585,415	7,500	1,944,058	1,562,027	3,506,085
ALBANY	145,930	107,201	65,223	136,339	4,000	458,693	363,785	822,478
BERKELEY	944,609	693,914	395,924	882,529	10,000	2,926,976	2,354,798	5,281,774
DUBLIN	506,412	372,012	214,484	473,130	7,500	1,573,538	1,262,424	2,835,962
EMERYVILLE	94,769	69,618	44,040	88,541	3,000	299,968	236,248	536,216
FREMONT	1,804,914	1,325,898	752,141	1,686,294	10,000	5,579,246	4,499,435	10,078,681
HAYWARD	1,235,367	907,506	516,315	1,154,177	10,000	3,823,364	3,079,621	6,902,986
LIVERMORE	707,887	520,017	297,907	661,364	7,500	2,194,674	1,764,677	3,959,351
NEWARK	377,335	277,192	161,039	352,536	6,000	1,174,102	940,651	2,114,754
OAKLAND	3,342,096	2,455,119	1,388,625	3,122,451	10,000	10,318,291	8,331,447	18,649,738
PIEDMONT	88,258	64,834	41,344	82,457	3,000	279,893	220,015	499,908
PLEASANTON	612,355	449,838	258,351	572,110	7,500	1,900,154	1,526,527	3,426,681
SAN LEANDRO	677,594	497,764	285,364	633,062	7,500	2,101,284	1,689,161	3,790,445
UNION CITY	567,451	416,852	239,758	530,158	7,500	1,761,720	1,414,588	3,176,308
ALPINE COUNTY								
AMADOR COUNTY								
AMADOR	1,426	1,047	5,560	1,332	1,000	10,365	3,554	13,919
IONE	61,710	45,333	37,719	57,655	2,000	204,416	153,836	358,252
JACKSON	37,451	27,512	24,778	34,990	1,000	125,732	93,362	219,094
PLYMOUTH	7,745	5,689	8,931	7,236	1,000	30,601	19,306	49,907
SUTTER CREEK	19,273	14,158	15,081	18,006	1,000	67,518	48,045	115,563
BUTTE COUNTY								
BIGGS	14,272	10,484	10,512	13,334	1,000	49,601	35,577	85,178
CHICO	850,179	624,545	345,047	794,305	10,000	2,624,076	2,119,395	4,743,471
GRIDLEY	50,737	37,271	25,105	47,402	2,000	162,516	126,481	288,996
OROVILLE	149,806	110,048	64,753	139,961	4,000	468,568	373,448	842,016
PARADISE	202,038	148,418	85,657	221,175	6,000	663,287	503,655	1,166,943
CALAVERAS COUNTY								
ANGELS CAMP	31,772	23,340	27,262	29,684	1,000	113,058	79,204	192,262
COLUSA COUNTY								
COLUSA	47,585	34,956	17,702	44,458	2,000	146,700	118,624	265,324
WILLIAMS	41,813	30,716	16,137	39,065	2,000	129,731	104,235	233,966

Local Streets and Roads - Projected FY2021-22 Revenues

Based on State Dept of Finance statewide revenue projections

Estimated May 2021

	Highway Users Tax Acct (HUTA) ⁽¹⁾ Streets & Highways Code					TOTAL HUTA	Road Mntnc Rehab Acct	TOTAL
	Sec2103 ⁽⁵⁾	Sec2105 ⁽³⁾	Sec2106 ⁽³⁾	Sec2107 ⁽³⁾	Sec2107.5 ⁽⁴⁾			
CONTRA COSTA COUNTY								
ANTIOCH	867,086	636,965	391,079	810,101	10,000	2,715,231	2,161,542	4,876,774
BRENTWOOD	501,803	368,627	228,349	468,824	7,500	1,575,104	1,250,936	2,826,040
CLAYTON	87,364	64,178	43,720	81,622	3,000	279,883	217,787	497,670
CONCORD	1,002,890	736,728	451,579	936,979	10,000	3,138,176	2,500,085	5,638,261
DANVILLE	338,111	248,378	155,426	315,890	6,000	1,063,805	842,871	1,906,676
EL CERRITO	192,289	141,257	90,463	179,652	5,000	608,661	479,354	1,088,016
HERCULES	196,736	144,523	92,444	183,806	6,000	623,509	490,439	1,113,948
LAFAYETTE	197,306	144,942	92,698	184,339	6,000	625,285	491,860	1,117,145
MARTINEZ	285,941	210,054	132,184	267,149	6,000	901,328	712,817	1,614,145
MORAGA	130,587	95,930	62,975	122,005	4,000	415,497	325,538	741,034
OAKLEY	327,207	240,368	150,568	305,703	6,000	1,029,846	815,688	1,845,534
ORINDA	146,485	107,608	70,058	136,857	4,000	465,008	365,168	830,176
PINOLE	150,307	110,416	71,760	140,428	4,000	476,912	374,697	851,608
PITTSBURG	572,722	420,724	259,943	535,083	7,500	1,795,972	1,427,728	3,223,700
PLEASANT HILL	264,064	193,982	122,438	246,709	6,000	833,193	658,279	1,491,472
RICHMOND	857,045	629,589	386,606	800,720	10,000	2,683,960	2,136,511	4,820,471
SAN PABLO	242,071	177,826	112,640	226,161	6,000	764,698	603,453	1,368,151
SAN RAMON	640,512	470,523	290,143	598,418	7,500	2,007,096	1,596,721	3,603,817
WALNUT CREEK	546,052	401,132	248,061	510,165	7,500	1,712,909	1,361,241	3,074,151
DEL NORTE COUNTY								
CRESCENT CITY	58,897	43,266	24,046	55,027	2,000	183,236	146,824	330,060
EL DORADO COUNTY								
PLACERVILLE	84,613	62,157	60,930	79,052	3,000	289,751	210,929	500,680
SOUTH LAKE TAHOE	173,579	127,512	119,948	1,207,359	5,000	1,633,399	432,712	2,066,110

Local Streets and Roads - Projected FY2021-22 Revenues

Based on State Dept of Finance statewide revenue projections

Estimated May 2021

	Highway Users Tax Acct (HUTA) ⁽¹⁾ Streets & Highways Code					TOTAL HUTA	Road Mntnc Rehab Acct	TOTAL
	Sec2103 ⁽⁵⁾	Sec2105 ⁽³⁾	Sec2106 ⁽³⁾	Sec2107 ⁽³⁾	Sec2107.5 ⁽⁴⁾			
FRESNO COUNTY								
CLOVIS	918,370	674,639	336,163	858,014	10,000	2,797,186	2,289,387	5,086,573
COALINGA	139,380	102,389	55,090	130,219	4,000	431,078	347,457	778,535
FIREBAUGH	61,502	45,180	26,991	57,460	2,000	193,133	153,317	346,450
FOWLER	49,735	36,536	22,745	46,466	2,000	157,482	123,983	281,465
FRESNO	4,205,730	3,089,549	1,522,298	3,929,326	20,000	12,766,903	10,484,383	23,251,286
HURON	56,247	41,319	25,095	52,550	2,000	177,210	140,216	317,426
KERMAN	122,912	90,292	49,149	114,834	4,000	381,186	306,404	687,590
KINGSBURG	99,277	72,929	40,621	92,753	3,000	308,580	247,486	556,066
MENDOTA	96,434	70,841	39,595	90,096	3,000	299,965	240,398	540,363
ORANGE COVE	72,869	53,530	31,092	68,080	2,000	227,570	181,653	409,222
PARLIER	122,449	89,952	48,982	114,402	4,000	379,785	305,252	685,036
REEDLEY	199,718	146,714	76,862	186,592	6,000	615,886	497,873	1,113,759
SANGER	209,489	153,892	80,387	195,722	6,000	645,490	522,232	1,167,722
SAN JOAQUIN	31,919	23,447	16,317	29,821	1,000	102,504	79,569	182,073
SELMA	188,305	138,330	72,744	175,930	5,000	580,309	469,423	1,049,732
GLENN COUNTY								
ORLAND	64,138	47,116	25,607	59,922	2,000	198,783	159,887	358,670
WILLOWS	47,839	35,143	20,320	44,695	2,000	149,997	119,258	269,254
HUMBOLDT COUNTY								
ARCATA	138,424	101,687	72,772	129,327	4,000	446,209	345,074	791,284
BLUE LAKE	9,841	7,229	9,632	9,194	1,000	36,896	24,532	61,427
EUREKA	209,536	153,926	107,690	195,765	6,000	672,916	522,347	1,195,264
FERNDALE	10,650	7,823	10,029	9,950	1,000	39,452	26,549	66,001
FORTUNA	93,421	68,627	50,673	87,281	3,000	303,002	232,886	535,888
RIO DELL	25,954	19,066	17,544	24,248	1,000	87,813	64,700	152,513
TRINIDAD	2,828	2,078	6,189	2,642	1,000	14,737	7,050	21,787
IMPERIAL COUNTY								
BRAWLEY	210,753	154,820	91,701	196,902	6,000	660,177	525,382	1,185,559
CALEXICO	315,147	231,509	134,746	294,435	6,000	981,837	785,624	1,767,462
CALIPATRIA	59,375	43,617	29,283	55,473	2,000	189,748	148,015	337,763
EL CENTRO	351,836	258,460	149,874	328,713	6,000	1,094,883	877,084	1,971,967
HOLTVILLE	49,003	35,998	25,006	45,782	2,000	157,789	122,158	279,947
IMPERIAL	153,405	112,692	68,054	143,323	4,000	481,473	382,419	863,893
WESTMORLAND	18,078	13,280	12,254	16,890	1,000	61,504	45,067	106,571
INYO COUNTY								
BISHOP	29,892	21,959	18,111	27,927	1,000	98,889	74,517	173,406

Local Streets and Roads - Projected FY2021-22 Revenues

Based on State Dept of Finance statewide revenue projections

Estimated May 2021

	Highway Users Tax Acct (HUTA) ⁽¹⁾ Streets & Highways Code					TOTAL HUTA	Road Mntnc Rehab Acct	TOTAL
	Sec2103 ⁽⁵⁾	Sec2105 ⁽³⁾	Sec2106 ⁽³⁾	Sec2107 ⁽³⁾	Sec2107.5 ⁽⁴⁾			
KERN COUNTY								
ARVIN	167,044	122,712	52,986	156,066	5,000	503,808	416,422	920,229
BAKERSFIELD	3,026,602	2,223,356	877,863	2,827,692	10,000	8,965,512	7,544,958	16,510,470
CALIFORNIA CITY	109,126	80,164	36,279	101,954	3,000	330,522	272,037	602,559
DELANO	408,737	300,260	122,706	381,875	7,500	1,221,078	1,018,933	2,240,011
MARICOPA	8,893	6,533	7,365	8,308	1,000	32,099	22,169	54,268
MCFARLAND	110,875	81,449	36,783	103,588	3,000	335,695	276,398	612,093
RIDGECREST	226,173	166,148	70,043	211,309	6,000	679,672	563,822	1,243,494
SHAFTER	157,520	115,715	50,239	147,167	5,000	475,640	392,678	868,318
TAFT	71,874	52,799	25,533	67,151	2,000	219,358	179,174	398,532
TEHACHAPI	111,075	81,596	36,841	103,775	3,000	336,288	276,897	613,185
WASCO	222,582	163,510	69,007	207,954	6,000	669,052	554,870	1,223,922
KINGS COUNTY								
AVENAL	119,482	87,772	40,407	111,630	4,000	363,292	297,856	661,147
CORCORAN	191,211	140,464	61,782	178,644	5,000	577,101	476,665	1,053,766
HANFORD	457,347	335,969	141,094	427,290	7,500	1,369,200	1,140,112	2,509,312
LEMOORE	204,280	150,065	65,677	190,855	6,000	616,877	509,246	1,126,123
LAKE COUNTY								
CLEARLAKE	117,517	86,329	46,700	109,794	4,000	364,340	292,957	657,297
LAKEPORT	36,627	26,906	17,859	34,220	1,000	116,612	91,307	207,919
LASSEN COUNTY								
SUSANVILLE	138,301	101,596	45,723	211,798	4,000	501,419	344,767	846,186
LOS ANGELES COUNTY								
AGOURA HILLS	158,483	116,422	69,717	148,067	5,000	497,690	395,079	892,768
ALHAMBRA	668,825	491,322	278,761	624,869	7,500	2,071,276	1,667,300	3,738,576
ARCADIA	440,879	323,872	185,391	411,904	7,500	1,369,547	1,099,059	2,468,606
ARTESIA	127,320	93,530	56,952	118,952	4,000	400,753	317,392	718,146
AVALON	30,277	22,242	17,202	28,287	1,000	99,008	75,477	174,485
AZUSA	382,668	281,109	161,547	357,518	6,000	1,188,842	953,945	2,142,787
BALDWIN PARK	587,603	431,656	245,491	548,985	7,500	1,821,235	1,464,823	3,286,058
BELL	281,510	206,799	120,111	263,009	6,000	877,429	701,771	1,579,200
BELLFLOWER	601,921	442,174	251,356	562,362	7,500	1,865,312	1,500,516	3,365,828
BELL GARDENS	327,115	240,300	138,791	305,616	6,000	1,017,822	815,458	1,833,280
BEVERLY HILLS	262,846	193,088	112,466	245,572	6,000	819,972	655,244	1,475,216
BRADBURY	8,107	5,955	8,121	7,574	1,000	30,757	20,209	50,966
BURBANK	815,771	599,270	338,953	762,158	10,000	2,526,152	2,033,621	4,559,773
CALABASAS	186,433	136,954	81,166	174,180	5,000	583,733	464,755	1,048,488
CARSON	717,496	527,076	298,698	670,342	7,500	2,221,112	1,788,632	4,009,744
CERRITOS	385,257	283,011	162,607	359,938	6,000	1,196,813	960,399	2,157,213
CLAREMONT	275,931	202,700	117,826	257,797	6,000	860,253	687,863	1,548,116
COMMERCE	99,162	72,845	45,418	92,645	3,000	313,069	247,198	560,267

Local Streets and Roads - Projected FY2021-22 Revenues

Based on State Dept of Finance statewide revenue projections

Estimated May 2021

	Highway Users Tax Acct (HUTA) ⁽¹⁾ Streets & Highways Code					TOTAL HUTA	Road Mntnc Rehab Acct	TOTAL
	Sec2103 ⁽⁵⁾	Sec2105 ⁽³⁾	Sec2106 ⁽³⁾	Sec2107 ⁽³⁾	Sec2107.5 ⁽⁴⁾			
COMPTON	755,441	554,950	314,241	705,793	7,500	2,337,924	1,883,223	4,221,148
COVINA	376,410	276,513	158,984	351,672	6,000	1,169,579	938,346	2,107,925
CUDAHY	186,271	136,835	81,100	174,029	5,000	583,235	464,351	1,047,586
CULVER CITY	305,969	224,766	130,130	285,861	6,000	952,726	762,745	1,715,471
DIAMOND BAR	440,610	323,674	185,281	411,652	7,500	1,368,716	1,098,387	2,467,103
DOWNEY	874,862	642,677	363,157	817,365	10,000	2,708,061	2,180,925	4,888,987
DUARTE	167,013	122,689	73,211	156,037	5,000	523,951	416,345	940,296
EL MONTE	899,105	660,487	373,088	840,015	10,000	2,782,694	2,241,361	5,024,055
EL SEGUNDO	129,285	94,973	57,757	120,788	4,000	406,803	322,291	729,094
GARDENA	469,584	344,959	197,149	438,723	7,500	1,457,915	1,170,618	2,628,533
GLENDALE	1,582,293	1,162,360	652,933	1,478,304	10,000	4,885,890	3,944,469	8,830,359
GLENORA	401,232	294,747	169,151	374,862	7,500	1,247,491	1,000,222	2,247,714
HAWAIIAN GARDENS	112,886	82,927	51,040	105,467	3,000	355,320	281,412	636,731
HAWTHORNE	669,680	491,950	279,112	625,668	7,500	2,073,910	1,669,432	3,743,342
HERMOSA BEACH	151,147	111,033	66,712	141,213	4,000	474,105	376,791	850,896
HIDDEN HILLS	14,395	10,575	10,696	13,449	1,000	50,115	35,885	86,000
HUNTINGTON PARK	458,626	336,909	192,661	428,485	7,500	1,424,181	1,143,301	2,567,482
INDUSTRY	3,475	2,553	6,224	3,247	1,000	16,499	8,664	25,163
INGLEWOOD	862,855	633,858	358,239	806,148	10,000	2,671,101	2,150,996	4,822,096
IRWINDALE	11,050	8,118	9,326	10,324	1,000	39,819	27,548	67,367
LA CANADA FLINTRIDGE	157,674	115,828	69,386	147,311	5,000	495,199	393,062	888,260
LA HABRA HEIGHTS	42,083	30,914	22,038	39,317	2,000	136,352	104,907	241,259
LAKEWOOD	616,855	453,144	257,474	576,315	7,500	1,911,288	1,537,746	3,449,033
LA MIRADA	376,649	276,688	159,082	351,896	6,000	1,170,315	938,942	2,109,256
LANCASTER	1,246,063	915,363	515,207	1,164,170	10,000	3,850,804	3,106,285	6,957,089
LA PUENTE	312,620	229,652	132,854	292,074	6,000	973,199	779,323	1,752,522
LA VERNE	256,612	188,508	109,912	239,747	6,000	800,780	639,703	1,440,482
LAWNDALE	252,751	185,672	108,331	236,140	6,000	788,894	630,078	1,418,973
LOMITA	158,352	116,326	69,663	147,945	5,000	497,286	394,752	892,039
LONG BEACH	3,638,934	2,673,178	1,495,366	3,399,780	10,000	11,217,257	9,071,427	20,288,684
LOS ANGELES	30,906,580	22,704,118	12,664,631	28,875,378	20,000	95,170,707	77,046,416	172,217,123
LYNWOOD	549,203	403,447	229,763	513,109	7,500	1,703,022	1,369,098	3,072,121
MALIBU	97,443	71,582	44,714	91,039	3,000	307,779	242,914	550,693
MANHATTAN BEACH	271,639	199,547	116,068	253,786	6,000	847,040	677,163	1,524,203
MAYWOOD	215,030	157,962	92,880	200,898	6,000	672,770	536,044	1,208,814
MONROVIA	292,329	214,747	124,543	273,117	6,000	910,736	728,742	1,639,479
MONTEBELLO	489,674	359,717	205,378	457,492	7,500	1,519,761	1,220,699	2,740,460
MONTEREY PARK	468,020	343,810	196,508	437,261	7,500	1,453,100	1,166,718	2,619,817
NORWALK	814,662	598,454	338,499	761,122	10,000	2,522,736	2,030,855	4,553,591
PALMDALE	1,207,825	887,274	499,545	1,128,446	10,000	3,733,089	3,010,964	6,744,053
PALOS VERDES ESTATES	103,554	76,071	47,217	96,748	3,000	326,591	258,148	584,739
PARAMOUNT	427,386	313,960	179,864	399,298	7,500	1,328,008	1,065,422	2,393,430

Local Streets and Roads - Projected FY2021-22 Revenues

Based on State Dept of Finance statewide revenue projections

Estimated May 2021

	Highway Users Tax Acct (HUTA) ⁽¹⁾ Streets & Highways Code					TOTAL HUTA	Road Mntnc Rehab Acct	TOTAL
	Sec2103 ⁽⁵⁾	Sec2105 ⁽³⁾	Sec2106 ⁽³⁾	Sec2107 ⁽³⁾	Sec2107.5 ⁽⁴⁾			
PASADENA	1,116,161	819,937	461,998	1,042,807	10,000	3,450,903	2,782,457	6,233,360
PICO RIVERA	488,364	358,754	204,842	456,268	7,500	1,515,729	1,217,433	2,733,162
POMONA	1,193,029	876,405	493,484	1,114,623	10,000	3,687,541	2,974,080	6,661,621
RANCHO PALOS VERDES	321,582	236,235	136,525	300,447	6,000	1,000,789	801,665	1,802,454
REDONDO BEACH	516,260	379,247	216,268	482,331	7,500	1,601,606	1,286,974	2,888,581
ROLLING HILLS ⁽²⁾								
ROLLING HILLS ESTATES	62,165	45,667	30,264	58,079	2,000	198,174	154,969	353,144
ROSEMEAD	418,925	307,744	176,398	391,393	7,500	1,301,960	1,044,329	2,346,289
SAN DIMAS	261,582	192,160	111,948	244,391	6,000	816,081	652,093	1,468,174
SAN FERNANDO	194,247	142,695	84,367	181,481	6,000	608,788	484,234	1,093,022
SAN GABRIEL	309,044	227,025	131,389	288,733	6,000	962,192	770,410	1,732,601
SAN MARINO	101,312	74,424	46,299	94,653	3,000	319,688	252,558	572,245
SANTA CLARITA	1,710,222	1,256,337	705,334	1,597,825	10,000	5,279,718	4,263,379	9,543,097
SANTA FE SPRINGS	140,982	103,566	62,549	131,717	4,000	442,814	351,452	794,267
SANTA MONICA	711,709	522,825	296,327	664,935	7,500	2,203,295	1,774,205	3,977,501
SIERRA MADRE	84,127	61,800	39,260	78,598	3,000	266,785	209,719	476,504
SIGNAL HILL	90,253	66,301	41,769	84,322	3,000	285,645	224,991	510,636
SOUTH EL MONTE	163,399	120,034	71,731	152,661	5,000	512,825	407,335	920,160
SOUTH GATE	747,511	549,125	310,993	698,384	7,500	2,313,513	1,863,456	4,176,969
SOUTH PASADENA	197,422	145,027	85,667	184,447	6,000	618,562	492,149	1,110,711
TEMPLE CITY	278,574	204,642	118,908	260,266	6,000	868,391	694,452	1,562,843
TORRANCE	1,121,587	823,923	464,220	1,047,875	10,000	3,467,604	2,795,981	6,263,585
VERNON	2,289	1,681	5,737	2,138	1,000	12,846	5,705	18,551
WALNUT	230,635	169,425	99,272	215,477	6,000	720,809	574,945	1,295,754
WEST COVINA	817,598	600,611	339,701	763,865	10,000	2,531,775	2,038,174	4,569,948
WEST HOLLYWOOD	278,983	204,942	119,076	260,648	6,000	869,648	695,470	1,565,118
WESTLAKE VILLAGE	63,729	46,816	30,904	59,541	2,000	202,990	158,869	361,859
WHITTIER	668,894	491,373	278,790	624,934	7,500	2,071,490	1,667,473	3,738,963

Local Streets and Roads - Projected FY2021-22 Revenues

Based on State Dept of Finance statewide revenue projections

Estimated May 2021

	Highway Users Tax Acct (HUTA) ⁽¹⁾ Streets & Highways Code					TOTAL HUTA	Road Mntnc Rehab Acct	TOTAL
	Sec2103 ⁽⁵⁾	Sec2105 ⁽³⁾	Sec2106 ⁽³⁾	Sec2107 ⁽³⁾	Sec2107.5 ⁽⁴⁾			
MADERA COUNTY								
CHOWCHILLA	144,257	105,972	41,306	134,777	4,000	430,313	359,617	789,929
MADERA	504,092	370,308	132,367	470,963	7,500	1,485,230	1,256,641	2,741,871
MARIN COUNTY								
BELVEDERE	16,368	12,024	12,459	15,292	1,000	57,142	40,803	97,945
CORTE MADERA	77,939	57,254	41,269	72,817	3,000	252,280	194,293	446,573
FAIRFAX	57,341	42,123	31,631	53,572	2,000	186,667	142,944	329,611
LARKSPUR	94,422	69,363	48,982	88,217	3,000	303,985	235,384	539,368
MILL VALLEY	113,079	83,068	57,712	105,647	3,000	362,506	281,892	644,398
NOVATO	413,831	304,002	198,440	386,634	7,500	1,310,407	1,031,631	2,342,038
ROSS	19,650	14,435	13,995	18,359	1,000	67,440	48,986	116,426
SAN ANSELMO	98,306	72,216	50,800	91,845	3,000	316,168	245,066	561,233
SAN RAFAEL	460,876	338,562	220,454	430,587	7,500	1,457,980	1,148,910	2,606,890
SAUSALITO	55,884	41,053	30,949	52,212	2,000	182,098	139,313	321,411
TIBURON	73,516	54,005	39,200	68,684	2,000	237,405	183,266	420,671
MARIPOSA COUNTY								
MENDOCINO COUNTY								
FORT BRAGG	57,233	42,044	32,011	53,472	2,000	186,759	142,675	329,433
POINT ARENA	3,475	2,553	6,452	3,247	1,000	16,728	8,664	25,392
UKIAH	123,875	90,999	63,695	115,734	4,000	398,302	308,805	707,108
WILLITS	39,085	28,712	23,382	36,516	2,000	129,696	97,435	227,131
MERCED COUNTY								
ATWATER	241,801	177,628	82,284	225,910	6,000	733,623	602,781	1,336,403
DOS PALOS	42,738	31,395	18,495	39,929	2,000	134,558	106,540	241,098
GUSTINE	45,273	33,258	19,308	42,298	2,000	142,136	112,860	254,997
LIVINGSTON	115,992	85,208	41,969	108,369	4,000	355,537	289,153	644,691
LOS BANOS	323,061	237,322	108,324	301,829	6,000	976,537	805,353	1,781,890
MERCED	679,058	498,839	222,402	634,430	7,500	2,042,230	1,692,811	3,735,041
MODOC COUNTY								
ALTURAS	21,785	16,003	12,115	21,834	1,000	72,738	54,307	127,045
MONO COUNTY								
MAMMOTH LAKES	63,452	46,612	57,466	1,911,300	2,000	2,080,829	158,178	2,239,007

Local Streets and Roads - Projected FY2021-22 Revenues

Based on State Dept of Finance statewide revenue projections

Estimated May 2021

	Highway Users Tax Acct (HUTA) ⁽¹⁾ Streets & Highways Code					TOTAL HUTA	Road Mntnc Rehab Acct	TOTAL
	Sec2103 ⁽⁵⁾	Sec2105 ⁽³⁾	Sec2106 ⁽³⁾	Sec2107 ⁽³⁾	Sec2107.5 ⁽⁴⁾			
MONTEREY COUNTY								
CARMEL-BY-THE-SEA	30,431	22,355	14,145	28,431	1,000	96,362	75,861	172,224
DEL REY OAKS	12,807	9,408	8,733	11,966	1,000	43,915	31,928	75,842
GONZALES	65,548	48,152	24,928	61,240	2,000	201,868	163,403	365,271
GREENFIELD	140,898	103,504	48,067	131,638	4,000	428,106	351,241	779,347
KING CITY	114,027	83,764	39,815	106,533	3,000	347,139	284,255	631,394
MARINA	192,721	141,574	63,981	180,055	6,000	584,330	480,430	1,064,761
MONTEREY	217,080	159,468	71,461	202,813	6,000	656,822	541,154	1,197,975
PACIFIC GROVE	117,633	86,414	40,923	109,902	4,000	358,872	293,245	652,117
SALINAS	1,250,093	918,324	388,678	1,167,936	10,000	3,735,031	3,116,332	6,851,363
SAND CITY	2,967	2,179	5,711	2,772	1,000	14,629	7,396	22,025
SEASIDE	258,438	189,850	84,161	241,453	6,000	779,903	644,256	1,424,158
SOLEDAD	198,339	145,700	65,706	185,304	6,000	601,049	494,435	1,095,483
NAPA COUNTY								
AMERICAN CANYON	160,571	117,956	58,553	150,018	5,000	492,099	400,285	892,384
CALISTOGA	41,212	30,275	18,596	38,504	2,000	130,586	102,737	233,323
NAPA	610,921	448,786	209,312	570,771	7,500	1,847,290	1,522,954	3,370,243
SAINT HELENA	46,799	34,379	20,466	43,723	2,000	147,367	116,664	264,031
YOUNTVILLE	22,602	16,603	12,366	21,116	1,000	73,688	56,344	130,032
NEVADA COUNTY								
GRASS VALLEY	99,138	72,828	102,219	92,623	3,000	369,808	247,140	616,948
NEVADA CITY	24,197	17,775	28,577	22,607	1,000	94,156	60,320	154,477
TRUCKEE	125,054	91,865	127,684	1,726,758	4,000	2,075,362	311,745	2,387,107

Local Streets and Roads - Projected FY2021-22 Revenues

Based on State Dept of Finance statewide revenue projections

Estimated May 2021

	Highway Users Tax Acct (HUTA) ⁽¹⁾ Streets & Highways Code					TOTAL HUTA	Road Mntnc Rehab Acct	TOTAL
	Sec2103 ⁽⁵⁾	Sec2105 ⁽³⁾	Sec2106 ⁽³⁾	Sec2107 ⁽³⁾	Sec2107.5 ⁽⁴⁾			
ORANGE COUNTY								
ALISO VIEJO	385,642	283,295	176,267	360,298	7,500	1,213,001	961,360	2,174,361
ANAHEIM	2,753,569	2,022,784	1,229,109	2,572,602	10,000	8,588,064	6,864,318	15,452,382
BREA	351,620	258,302	161,139	328,511	6,000	1,105,572	876,546	1,982,119
BUENA PARK	631,882	464,183	285,751	590,354	7,500	1,979,670	1,575,206	3,554,876
COSTA MESA	884,486	649,748	398,066	826,357	10,000	2,768,658	2,204,919	4,973,577
CYPRESS	379,693	278,924	173,622	354,739	6,000	1,192,978	946,530	2,139,508
DANA POINT	257,005	188,797	119,071	240,114	6,000	810,987	640,682	1,451,670
FOUNTAIN VALLEY	430,599	316,320	196,256	402,300	7,500	1,352,975	1,073,433	2,426,408
FULLERTON	1,093,205	803,074	490,868	1,021,359	10,000	3,418,505	2,725,230	6,143,735
GARDEN GROVE	1,347,027	989,533	603,724	1,258,500	10,000	4,208,784	3,357,978	7,566,762
HUNTINGTON BEACH	1,551,084	1,139,433	694,453	1,449,146	10,000	4,844,116	3,866,667	8,710,783
IRVINE	2,170,852	1,594,718	970,018	2,028,182	10,000	6,773,769	5,411,674	12,185,443
LAGUNA BEACH	175,105	128,633	82,656	163,597	5,000	554,991	436,515	991,506
LAGUNA HILLS	242,803	178,364	112,756	226,845	6,000	766,768	605,278	1,372,046
LAGUNA NIGUEL	503,329	369,748	228,593	470,250	7,500	1,579,421	1,254,740	2,834,160
LAGUNA WOODS	125,401	92,120	60,556	117,159	4,000	399,237	312,609	711,846
LA HABRA	488,341	358,737	221,929	456,247	7,500	1,532,754	1,217,375	2,750,130
LAKE FOREST	652,788	479,541	295,047	609,887	7,500	2,044,763	1,627,323	3,672,086
LA PALMA	119,968	88,129	58,141	112,084	4,000	382,322	299,066	681,387
LOS ALAMITOS	89,136	65,480	44,432	83,278	3,000	285,326	222,205	507,531
MISSION VIEJO	726,427	533,637	327,789	678,686	7,500	2,274,039	1,810,897	4,084,936
NEWPORT BEACH	661,026	485,593	298,710	617,583	7,500	2,070,411	1,647,859	3,718,270
ORANGE	1,079,350	792,895	484,707	1,008,414	10,000	3,375,366	2,690,690	6,066,056
PLACENTIA	396,816	291,503	181,235	370,737	7,500	1,247,791	989,215	2,237,005
RANCHO SANTA MARGARITA	376,002	276,213	171,980	351,291	6,000	1,181,486	937,328	2,118,814
SAN CLEMENTE	497,665	365,587	226,075	464,958	7,500	1,561,786	1,240,620	2,802,406
SAN JUAN CAPISTRANO	279,869	205,593	129,237	261,476	6,000	882,174	697,679	1,579,854
SANTA ANA	2,581,932	1,896,699	1,152,795	2,412,245	10,000	8,053,670	6,436,447	14,490,118
SEAL BEACH	192,590	141,477	90,431	179,933	5,000	609,431	480,104	1,089,534
STANTON	301,130	221,211	138,690	281,339	6,000	948,371	750,681	1,699,051
TUSTIN	619,429	455,035	280,214	578,719	7,500	1,940,898	1,544,162	3,485,059
VILLA PARK	44,788	32,901	24,714	41,844	2,000	146,247	111,650	257,897
WESTMINSTER	712,202	523,187	321,464	665,396	7,500	2,229,748	1,775,435	4,005,183
YORBA LINDA	529,021	388,621	240,017	494,254	7,500	1,659,413	1,318,787	2,978,199

Local Streets and Roads - Projected FY2021-22 Revenues

Based on State Dept of Finance statewide revenue projections

Estimated May 2021

	Highway Users Tax Acct (HUTA) ⁽¹⁾ Streets & Highways Code					TOTAL HUTA	Road Mntnc Rehab Acct	TOTAL
	Sec2103 ⁽⁵⁾	Sec2105 ⁽³⁾	Sec2106 ⁽³⁾	Sec2107 ⁽³⁾	Sec2107.5 ⁽⁴⁾			
PLACER COUNTY								
AUBURN	112,462	82,615	56,835	105,071	3,000	359,984	280,355	640,339
COLFAX	16,583	12,182	12,473	15,494	1,000	57,732	41,341	99,073
LINCOLN	380,040	279,179	180,640	355,063	6,000	1,200,922	947,394	2,148,316
LOOMIS	53,079	38,992	29,359	49,591	2,000	173,022	132,320	305,342
ROCKLIN	542,121	398,245	255,633	506,493	7,500	1,709,992	1,351,444	3,061,436
ROSEVILLE	1,118,635	821,755	522,378	1,045,118	10,000	3,517,885	2,788,624	6,306,509
PLUMAS COUNTY								
PORTOLA	16,214	11,911	8,697	128,698	1,000	166,519	40,418	206,938
RIVERSIDE COUNTY								
BANNING	239,851	176,196	111,014	224,088	6,000	757,149	597,920	1,355,069
BEAUMONT	396,670	291,395	180,458	370,600	7,500	1,246,623	988,850	2,235,473
BLYTHE	160,417	117,843	75,838	149,874	5,000	508,973	399,901	908,873
CALIMESA	71,890	52,811	36,635	67,165	2,000	230,501	179,213	409,714
CANYON LAKE	84,767	62,270	42,337	79,196	3,000	271,570	211,313	482,883
CATHEDRAL CITY	412,891	303,312	187,642	385,755	7,500	1,297,099	1,029,288	2,326,387
COACHELLA	363,618	267,116	165,822	339,721	6,000	1,142,277	906,457	2,048,734
CORONA	1,296,530	952,437	578,946	1,211,321	10,000	4,049,233	3,232,093	7,281,326
DESERT HOT SPRINGS	228,562	167,903	106,015	213,541	6,000	722,020	569,777	1,291,797
EASTVALE	511,783	375,958	231,434	478,148	7,500	1,604,823	1,275,813	2,880,636
HEMET	656,364	482,168	295,459	613,227	7,500	2,054,718	1,636,237	3,690,955
INDIAN WELLS	41,636	30,586	23,238	38,900	2,000	136,359	103,793	240,152
INDIO	699,333	513,733	314,487	653,372	7,500	2,188,426	1,743,353	3,931,779
JURUPA VALLEY	825,188	606,187	370,220	770,956	10,000	2,582,552	2,057,096	4,639,648
LAKE ELSINORE	488,973	359,202	221,333	456,837	7,500	1,533,845	1,218,951	2,752,795
LA QUINTA	313,328	230,173	143,552	292,736	6,000	985,789	781,091	1,766,880
MENIFEE	748,205	549,635	336,130	699,032	7,500	2,340,501	1,865,185	4,205,686
MORENO VALLEY	1,609,319	1,182,213	717,459	1,503,553	10,000	5,022,544	4,011,839	9,034,383
MURRIETA	890,520	654,180	399,151	831,995	10,000	2,785,847	2,219,961	5,005,807
NORCO	212,410	156,037	98,862	198,450	6,000	671,759	529,513	1,201,272
PALM DESERT	408,313	299,949	185,615	381,479	7,500	1,282,856	1,017,877	2,300,732
PALM SPRINGS	365,475	268,480	166,644	341,456	6,000	1,148,056	911,087	2,059,142
PERRIS	618,034	454,011	278,486	577,416	7,500	1,935,446	1,540,685	3,476,131
RANCHO MIRAGE	147,294	108,203	70,026	137,613	4,000	467,136	367,186	834,322
RIVERSIDE	2,528,783	1,857,656	1,124,628	2,362,589	10,000	7,883,656	6,303,954	14,187,609
SAN JACINTO	393,225	288,865	178,933	367,382	7,500	1,235,905	980,263	2,216,167
TEMECULA	862,848	633,852	386,897	806,141	10,000	2,699,738	2,150,977	4,850,714
WILDOMAR	286,535	210,490	131,687	267,703	6,000	902,414	714,296	1,616,711

Local Streets and Roads - Projected FY2021-22 Revenues

Based on State Dept of Finance statewide revenue projections

Estimated May 2021

	Highway Users Tax Acct (HUTA) ⁽¹⁾ Streets & Highways Code					TOTAL HUTA	Road Mntnc Rehab Acct	TOTAL
	Sec2103 ⁽⁵⁾	Sec2105 ⁽³⁾	Sec2106 ⁽³⁾	Sec2107 ⁽³⁾	Sec2107.5 ⁽⁴⁾			
SACRAMENTO COUNTY								
CITRUS HEIGHTS	676,677	497,090	330,846	632,205	7,500	2,144,319	1,686,875	3,831,194
ELK GROVE	1,357,454	997,192	658,868	1,268,241	10,000	4,291,754	3,383,970	7,675,724
FOLSOM	628,892	461,987	307,822	587,561	7,500	1,993,761	1,567,752	3,561,513
GALT	199,194	146,329	100,779	186,103	6,000	638,404	496,567	1,134,971
ISLETON	6,381	4,687	7,874	5,961	1,000	25,904	15,906	41,810
RANCHO CORDOVA	604,009	443,708	295,832	564,313	7,500	1,915,362	1,505,722	3,421,084
SACRAMENTO	3,937,266	2,892,334	1,901,911	3,678,506	20,000	12,430,017	9,815,134	22,245,151
SAN BENITO COUNTY								
HOLLISTER	313,221	230,093	138,476	292,636	6,000	980,425	780,822	1,761,247
SAN JUAN BAUTISTA	16,275	11,956	11,746	15,206	1,000	56,183	40,572	96,755
SAN BERNARDINO COUNTY								
ADELANTO	274,821	201,885	126,423	256,760	6,000	865,889	685,097	1,550,986
APPLE VALLEY	573,285	421,138	258,509	535,608	7,500	1,796,040	1,429,131	3,225,171
BARSTOW	187,011	137,379	87,562	174,720	5,000	591,672	466,195	1,057,868
BIG BEAR LAKE	40,118	29,471	22,554	413,007	2,000	507,150	100,009	607,159
CHINO	686,679	504,438	308,693	641,550	7,500	2,148,861	1,711,810	3,860,671
CHINO HILLS	635,049	466,510	285,843	593,313	7,500	1,988,215	1,583,101	3,571,316
COLTON	417,037	306,357	189,361	389,629	7,500	1,309,884	1,039,623	2,349,506
FONTANA	1,641,391	1,205,774	731,204	1,533,518	10,000	5,121,887	4,091,792	9,213,679
GRAND TERRACE	95,756	70,342	47,177	89,462	3,000	305,737	238,707	544,444
HESPERIA	742,810	545,672	333,534	693,992	7,500	2,323,509	1,851,738	4,175,246
HIGHLAND	426,322	313,178	193,471	398,304	7,500	1,338,776	1,062,771	2,401,547
LOMA LINDA	189,068	138,890	88,473	176,643	5,000	598,074	471,325	1,069,399
MONTCLAIR	304,312	223,549	139,475	284,313	6,000	957,649	758,614	1,716,264
NEEDLES	40,441	29,708	22,698	37,784	2,000	132,631	100,816	233,447
ONTARIO	1,409,215	1,035,216	628,454	1,316,601	10,000	4,399,486	3,513,006	7,912,491
RANCHO CUCAMONGA	1,352,583	993,614	603,391	1,263,691	10,000	4,223,279	3,371,829	7,595,108
REDLANDS	546,761	401,653	246,771	510,827	7,500	1,713,511	1,363,009	3,076,520
RIALTO	805,692	591,865	361,362	752,741	10,000	2,521,660	2,008,494	4,530,154
SAN BERNARDINO	1,679,505	1,233,773	748,072	1,569,127	10,000	5,240,477	4,186,807	9,427,283
TWENTYNINE PALMS	225,464	165,627	104,580	210,646	6,000	712,317	562,055	1,274,372
UPLAND	607,346	446,159	273,583	567,430	7,500	1,902,018	1,514,040	3,416,058
VICTORVILLE	974,293	715,720	435,977	910,262	10,000	3,046,252	2,428,796	5,475,047
YUCAIPA	429,320	315,381	194,797	401,105	7,500	1,348,103	1,070,244	2,418,347
YUCCA VALLEY	171,352	125,876	80,632	160,091	5,000	542,951	427,160	970,111

Local Streets and Roads - Projected FY2021-22 Revenues

Based on State Dept of Finance statewide revenue projections

Estimated May 2021

	Highway Users Tax Acct (HUTA) ⁽¹⁾ Streets & Highways Code					TOTAL HUTA	Road Mntnc Rehab Acct	TOTAL
	Sec2103 ⁽⁵⁾	Sec2105 ⁽³⁾	Sec2106 ⁽³⁾	Sec2107 ⁽³⁾	Sec2107.5 ⁽⁴⁾			
SAN DIEGO COUNTY								
CARLSBAD	882,059	647,965	408,192	824,089	10,000	2,772,305	2,198,868	4,971,173
CHULA VISTA	2,097,606	1,540,911	964,097	1,959,749	10,000	6,572,363	5,229,080	11,801,443
CORONADO	190,317	139,807	91,837	177,809	5,000	604,770	474,437	1,079,207
DEL MAR	32,889	24,161	19,841	30,728	1,000	108,620	81,990	190,609
EL CAJON	804,459	590,959	372,703	751,589	10,000	2,529,711	2,005,420	4,535,131
ENCINITAS	479,186	352,012	223,946	447,694	7,500	1,510,338	1,194,554	2,704,892
ESCONDIDO	1,179,089	866,164	544,033	1,101,599	10,000	3,700,885	2,939,329	6,640,213
TIMPERIAL BEACH	216,194	158,817	103,672	201,985	6,000	686,667	538,945	1,225,612
LA MESA	462,102	339,462	216,133	431,732	7,500	1,456,929	1,151,964	2,608,893
LEMON GROVE	204,411	150,161	98,283	190,977	6,000	649,832	509,572	1,159,405
NATIONAL CITY	478,539	351,537	223,650	447,089	7,500	1,508,314	1,192,940	2,701,254
OCEANSIDE	1,366,555	1,003,877	629,766	1,276,744	10,000	4,286,942	3,406,657	7,693,599
POWAY	380,202	279,298	178,678	355,215	6,000	1,199,392	947,797	2,147,189
SAN DIEGO	11,023,437	8,097,868	5,046,146	10,298,969	20,000	34,486,421	27,480,113	61,966,534
SAN MARCOS	749,099	550,291	347,385	699,867	7,500	2,354,142	1,867,413	4,221,556
SANTEE	446,944	328,327	209,201	417,570	7,500	1,409,542	1,114,178	2,523,720
SOLANA BEACH	106,636	78,336	53,568	99,628	3,000	341,168	265,832	607,000
VISTA	793,170	582,666	367,540	741,042	10,000	2,494,418	1,977,277	4,471,695
SAN FRANCISCO COUNTY								
SAN FRANCISCO	6,918,549	5,082,398	1,903,870	6,463,857	20,000	20,388,674	17,247,117	37,635,790
SAN JOAQUIN COUNTY								
ESCALON	57,626	42,332	29,188	53,839	2,000	184,985	143,655	328,640
LATHROP	206,777	151,899	92,311	193,187	6,000	650,174	515,470	1,165,644
LODI	523,473	384,546	226,342	489,070	7,500	1,630,930	1,304,955	2,935,885
MANTECA	653,474	480,045	281,360	610,527	7,500	2,032,907	1,629,033	3,661,940
RIPON	122,758	90,178	56,753	114,690	4,000	388,379	306,020	694,399
STOCKTON	2,454,550	1,803,124	1,043,603	2,293,236	10,000	7,604,513	6,118,901	13,723,414
TRACY	739,250	543,057	317,662	690,666	7,500	2,298,135	1,842,863	4,140,998
SAN LUIS OBISPO COUNTY								
ARROYO GRANDE	136,297	100,124	76,145	127,340	4,000	443,906	339,772	783,679
ATASCADERO	231,621	170,150	126,042	216,399	6,000	750,212	577,404	1,327,616
EL PASO DE ROBLES	240,591	176,739	130,738	224,779	6,000	778,847	599,765	1,378,612
GROVER BEACH	101,828	74,803	58,102	95,136	3,000	332,869	253,845	586,714
MORRO BAY	78,864	57,934	46,081	73,681	3,000	259,560	196,598	456,158
PISMO BEACH	62,720	46,074	37,631	58,598	2,000	207,022	156,353	363,375
SAN LUIS OBISPO	353,862	259,949	190,030	330,606	6,000	1,140,447	882,137	2,022,584

Local Streets and Roads - Projected FY2021-22 Revenues

Based on State Dept of Finance statewide revenue projections

Estimated May 2021

	Highway Users Tax Acct (HUTA) ⁽¹⁾ Streets & Highways Code					TOTAL HUTA	Road Mntnc Rehab Acct	TOTAL
	Sec2103 ⁽⁵⁾	Sec2105 ⁽³⁾	Sec2106 ⁽³⁾	Sec2107 ⁽³⁾	Sec2107.5 ⁽⁴⁾			
SAN MATEO COUNTY								
ATHERTON	54,181	39,802	29,107	50,620	2,000	175,711	135,068	310,779
BELMONT	206,623	151,786	97,497	193,043	6,000	654,949	515,086	1,170,034
BRISBANE	35,702	26,227	20,817	33,356	1,000	117,102	89,001	206,103
BURLINGAME	232,091	170,495	108,923	216,838	6,000	734,347	578,576	1,312,923
COLMA	13,324	9,788	10,777	12,448	1,000	47,337	33,215	80,552
DALY CITY	841,055	617,843	382,121	785,780	10,000	2,636,799	2,096,650	4,733,449
EAST PALO ALTO	237,300	174,322	111,260	221,705	6,000	750,587	591,562	1,342,149
FOSTER CITY	254,554	186,997	119,000	237,825	6,000	804,376	634,574	1,438,950
HALF MOON BAY	95,794	70,371	47,776	89,498	3,000	306,439	238,803	545,242
HILLSBOROUGH	87,988	64,636	44,274	82,205	3,000	282,103	219,343	501,446
MENLO PARK	271,670	199,570	126,679	253,815	6,000	857,733	677,240	1,534,973
MILLBRAE	175,945	129,250	83,734	164,382	5,000	558,310	438,609	996,920
PACIFICA	295,381	216,988	137,316	275,968	6,000	931,654	736,350	1,668,004
PORTOLA VALLEY	35,502	26,080	20,727	33,169	1,000	116,477	88,502	204,979
REDWOOD CITY	668,532	491,107	304,722	624,595	7,500	2,096,456	1,666,570	3,763,026
SAN BRUNO	350,271	257,311	161,942	327,251	6,000	1,102,775	873,185	1,975,960
SAN CARLOS	232,299	170,648	109,016	217,032	6,000	734,996	579,094	1,314,090
SAN MATEO	794,395	583,566	361,188	742,187	10,000	2,491,336	1,980,331	4,471,667
SOUTH SAN FRANCISCO	523,080	384,257	239,468	488,703	7,500	1,643,008	1,303,975	2,946,983
WOODSIDE	43,740	32,131	24,423	40,865	2,000	143,159	109,038	252,196
SANTA BARBARA COUNTY								
BUELLTON	42,106	30,931	20,369	39,339	2,000	134,744	104,965	239,710
CARPINTERIA	102,760	75,488	42,796	96,007	3,000	320,051	256,169	576,220
GOLETA	248,312	182,411	96,613	231,993	6,000	765,330	619,013	1,384,344
GUADALUPE	62,273	45,746	27,825	58,180	2,000	196,024	155,238	351,262
LOMPOC	337,418	247,869	129,560	315,242	6,000	1,036,089	841,142	1,877,230
SANTA BARBARA	720,602	529,357	271,242	673,243	7,500	2,201,944	1,796,374	3,998,318
SANTA MARIA	827,685	608,021	310,836	773,289	10,000	2,529,831	2,063,320	4,593,151
SOLVANG	42,861	31,486	20,648	40,044	2,000	137,039	106,848	243,887

Local Streets and Roads - Projected FY2021-22 Revenues

Based on State Dept of Finance statewide revenue projections

Estimated May 2021

	Highway Users Tax Acct (HUTA) ⁽¹⁾ Streets & Highways Code					TOTAL HUTA	Road Mntnc Rehab Acct	TOTAL
	Sec2103 ⁽⁵⁾	Sec2105 ⁽³⁾	Sec2106 ⁽³⁾	Sec2107 ⁽³⁾	Sec2107.5 ⁽⁴⁾			
SANTA CLARA COUNTY								
CAMPBELL	325,874	239,389	143,455	304,457	6,000	1,019,175	812,365	1,831,540
CUPERTINO	458,888	337,101	200,051	428,730	7,500	1,432,271	1,143,954	2,576,225
GILROY	439,893	323,147	191,969	410,983	7,500	1,373,492	1,096,600	2,470,093
LOS ALTOS	237,932	174,786	106,037	222,295	6,000	747,051	593,137	1,340,188
LOS ALTOS HILLS	64,831	47,625	32,385	60,570	2,000	207,412	161,616	369,028
LOS GATOS	242,271	177,973	107,883	226,349	6,000	760,476	603,952	1,364,429
MILPITAS	600,772	441,330	260,421	561,289	7,500	1,871,313	1,497,654	3,368,967
MONTE SERENO	27,696	20,345	16,584	25,875	1,000	91,500	69,042	160,542
MORGAN HILL	357,977	262,972	157,115	334,451	6,000	1,118,515	892,395	2,010,910
MOUNTAIN VIEW	633,993	465,734	274,557	592,327	7,500	1,974,111	1,580,469	3,554,580
PALO ALTO	533,460	391,882	231,781	498,401	7,500	1,663,023	1,329,852	2,992,875
SAN JOSE	8,085,100	5,939,352	3,444,914	7,553,742	20,000	25,043,108	20,155,190	45,198,298
SANTA CLARA	994,883	730,846	428,111	929,499	10,000	3,093,339	2,480,126	5,573,465
SARATOGA	239,119	175,658	106,542	223,404	6,000	750,723	596,095	1,346,819
SUNNYVALE	1,206,022	885,949	517,948	1,126,761	10,000	3,746,680	3,006,469	6,753,149
SANTA CRUZ COUNTY								
CAPITOLA	77,893	57,220	36,618	72,774	3,000	247,505	194,178	441,682
SANTA CRUZ	496,455	364,698	207,592	463,828	7,500	1,540,074	1,237,604	2,777,678
SCOTTS VALLEY	90,107	66,193	41,607	84,185	3,000	285,092	224,626	509,718
WATSONVILLE	396,978	291,622	166,957	370,888	7,500	1,233,945	989,618	2,223,563
SHASTA COUNTY								
ANDERSON	82,231	60,408	52,362	76,827	3,000	274,828	204,993	479,821
REDDING	706,977	519,349	413,710	660,514	7,500	2,308,050	1,762,410	4,070,460
SHASTA LAKE	82,124	60,328	52,300	76,726	3,000	274,478	204,724	479,202
SIERRA COUNTY								
LOYALTON	6,018	4,421	6,097	21,878	1,000	39,415	15,003	54,418
SISKIYOU COUNTY								
DORRIS	7,675	5,638	8,843	7,171	1,000	30,327	19,133	49,461
DUNSMUIR	12,715	9,341	11,498	37,737	1,000	72,291	31,697	103,988
ETNA	5,741	4,217	7,824	5,364	1,000	24,146	14,312	38,458
FORT JONES	5,471	4,019	7,682	5,112	1,000	23,284	13,639	36,924
MONTAGUE	11,120	8,169	10,658	10,389	1,000	41,335	27,720	69,056
MOUNT SHASTA	26,154	19,213	18,577	92,871	1,000	157,816	65,200	223,016
TULELAKE	7,783	5,718	8,900	7,272	1,000	30,672	19,402	50,075
WEED	22,864	16,796	16,844	21,361	1,000	78,865	56,997	135,862
YREKA	59,999	44,076	36,406	56,722	2,000	199,204	149,571	348,775

Local Streets and Roads - Projected FY2021-22 Revenues

Based on State Dept of Finance statewide revenue projections

Estimated May 2021

	Highway Users Tax Acct (HUTA) ⁽¹⁾ Streets & Highways Code					TOTAL HUTA	Road Mntnc Rehab Acct	TOTAL
	Sec2103 ⁽⁵⁾	Sec2105 ⁽³⁾	Sec2106 ⁽³⁾	Sec2107 ⁽³⁾	Sec2107.5 ⁽⁴⁾			
SOLANO COUNTY								
BENICIA	209,412	153,835	104,956	195,650	6,000	669,853	522,040	1,191,893
DIXON	153,905	113,060	78,409	143,791	4,000	493,165	383,668	876,833
FAIRFIELD	901,463	662,219	435,945	842,218	10,000	2,851,844	2,247,239	5,099,084
RIO VISTA	76,960	56,535	41,608	71,903	2,000	249,007	191,853	440,860
SUISUN CITY	224,393	164,840	112,121	209,646	6,000	716,999	559,385	1,276,384
VACAVILLE	761,783	559,609	369,140	711,718	7,500	2,409,749	1,899,034	4,308,783
VALLEJO	917,507	674,005	443,618	857,208	10,000	2,902,337	2,287,235	5,189,573
SONOMA COUNTY								
CLOVERDALE	70,996	52,154	37,350	66,330	2,000	228,830	176,984	405,815
COTATI	58,050	42,644	31,415	54,235	2,000	188,343	144,711	333,054
HEALDSBURG	93,159	68,435	47,511	87,036	3,000	299,141	232,233	531,374
PETALUMA	476,797	350,257	223,402	445,462	7,500	1,503,418	1,188,598	2,692,017
ROHNERT PARK	331,892	243,810	156,966	310,080	6,000	1,048,748	827,368	1,876,116
SANTA ROSA	1,337,988	982,892	618,240	1,250,055	10,000	4,199,175	3,335,445	7,534,620
SEBASTOPOL	59,683	43,844	32,164	55,761	2,000	193,452	148,784	342,236
SONOMA	85,152	62,553	43,840	79,556	3,000	274,101	212,274	486,375
WINDSOR	217,681	159,909	104,602	203,375	6,000	691,567	542,652	1,234,219
STANISLAUS COUNTY								
CERES	373,205	274,158	161,658	348,677	6,000	1,163,698	930,355	2,094,053
HUGHSON	56,239	41,313	28,437	52,543	2,000	180,532	140,197	320,729
MODESTO	1,713,327	1,258,618	724,914	1,600,726	10,000	5,307,586	4,271,121	9,578,706
NEWMAN	91,795	67,433	43,381	85,762	3,000	291,371	228,833	520,204
OAKDALE	177,216	130,184	79,284	165,570	5,000	557,254	441,779	999,033
PATTERSON	177,810	130,620	79,534	166,124	5,000	559,087	443,258	1,002,345
RIVERBANK	192,883	141,693	85,869	180,206	6,000	606,651	480,834	1,087,484
TURLOCK	572,537	420,589	245,438	534,910	7,500	1,780,974	1,427,267	3,208,241
WATERFORD	68,538	50,348	33,606	64,033	2,000	218,526	170,856	389,382
SUTTER COUNTY								
LIVE OAK	70,896	52,080	34,272	66,236	2,000	225,485	176,735	402,219
YUBA CITY	542,954	398,856	230,511	507,270	7,500	1,687,092	1,353,519	3,040,611
TEHAMA COUNTY								
CORNING	59,052	43,380	30,087	55,171	2,000	189,689	147,208	336,897
RED BLUFF	109,773	80,640	51,807	102,559	3,000	347,778	273,651	621,429
TEHAMA	3,429	2,519	6,268	3,204	1,000	16,421	8,549	24,969
TRINITY COUNTY								

Local Streets and Roads - Projected FY2021-22 Revenues

Based on State Dept of Finance statewide revenue projections

Estimated May 2021

	Highway Users Tax Acct (HUTA) ⁽¹⁾ Streets & Highways Code					TOTAL HUTA	Road Mntnc Rehab Acct	TOTAL
	Sec2103 ⁽⁵⁾	Sec2105 ⁽³⁾	Sec2106 ⁽³⁾	Sec2107 ⁽³⁾	Sec2107.5 ⁽⁴⁾			
TULARE COUNTY								
DINUBA	200,311	147,150	82,979	187,147	6,000	623,587	499,352	1,122,939
EXETER	84,998	62,440	37,974	79,412	3,000	267,823	211,890	479,713
FARMERSVILLE	87,841	64,529	39,083	82,068	3,000	276,522	218,978	495,500
LINDSAY	101,366	74,464	44,362	94,704	3,000	317,895	252,692	570,587
PORTERVILLE	459,705	337,702	184,218	429,493	7,500	1,418,617	1,145,990	2,564,607
TULARE	522,733	384,002	208,817	488,379	7,500	1,611,430	1,303,111	2,914,541
VISALIA	1,068,438	784,879	421,799	998,219	10,000	3,283,335	2,663,488	5,946,823
WOODLAKE	59,899	44,002	28,178	55,963	2,000	190,042	149,322	339,364
TUOLUMNE COUNTY								
SONORA	37,783	27,755	30,723	35,300	1,000	132,561	94,188	226,749
VENTURA COUNTY								
CAMARILLO	541,436	397,741	254,411	505,852	7,500	1,706,940	1,349,734	3,056,674
FILLMORE	119,953	88,118	60,100	112,069	4,000	384,240	299,027	683,267
MOORPARK	279,561	205,366	133,682	261,188	6,000	885,797	696,911	1,582,708
OJAI	58,235	42,779	31,647	54,407	2,000	189,069	145,172	334,241
OXNARD	1,590,161	1,168,140	737,892	1,485,655	10,000	4,991,848	3,964,082	8,955,930
PORT HUENEME	181,917	133,637	88,667	169,961	5,000	579,182	453,497	1,032,680
SAN BUENAVENTURA	820,179	602,508	382,917	766,277	10,000	2,581,880	2,044,609	4,626,489
SANTA PAULA	234,180	172,029	112,761	218,789	6,000	743,759	583,782	1,327,540
SIMI VALLEY	964,144	708,265	449,287	900,780	10,000	3,032,475	2,403,496	5,435,971
THOUSAND OAKS	976,227	717,141	454,857	912,069	10,000	3,070,294	2,433,618	5,503,912
YOLO COUNTY								
DAVIS	533,128	391,639	237,349	498,091	7,500	1,667,707	1,329,026	2,996,732
WEST SACRAMENTO	418,655	307,546	187,416	391,141	7,500	1,312,257	1,043,657	2,355,914
WINTERS	56,092	41,206	29,267	52,406	2,000	180,971	139,832	320,803
WOODLAND	468,082	343,855	208,975	437,319	7,500	1,465,731	1,166,872	2,632,603
YUBA COUNTY								
MARYSVILLE	95,740	70,331	41,670	89,448	3,000	300,189	238,669	538,857
WHEATLAND	28,058	20,611	15,605	26,214	1,000	91,488	69,945	161,433
Statewide Total	\$ 256,660,500	\$ 188,544,000	\$ 110,553,454	\$ 245,016,500	\$ 2,709,500	\$ 803,483,954	\$ 639,824,000	\$ 1,443,307,954

Notes:

1. The Highway Users Tax is also known as the "Motor Vehicle Fuel Tax", the "Gasoline Excise Tax" and "Article XIX Revenues."
2. Rolling Hills has no public streets and is therefore not eligible for HUTA or RMRA allocations.
3. Str&HwysCode §§ 2103, 2105, 2106, 2107 and RMRA amounts are paid monthly. Includes special payments for snow removal.
4. Str&HwysCode § 2107.5 amounts are typically paid by the State Controller once per year in July.
5. Str&HwysCode § 2103 allocations replace the former Prop42 TCRF revenues. Previously adjusted annually by the BOE until July 2019.

Local Streets and Roads - Projected FY2020-21 Revenues

Source: CSAC

Based on State Dept of Finance statewide revenue projections

Estimated May 2021

	Highway Users Tax Acct ⁽¹⁾ Streets & Hwys Code				TOTAL HUTA	Road Maintnc Rehab Acct	TOTAL Annual
	Sec2103 ⁽²⁾	Sec2104	Sec2105	Sec2106			
ALAMEDA COUNTY	6,498,204	12,196,113	5,569,340	369,285	24,632,942	17,279,723	41,912,665
ALPINE COUNTY	125,310	294,300	139,772	21,050	580,432	333,219	913,651
AMADOR COUNTY	618,486	624,022	462,206	169,370	1,874,084	1,644,650	3,518,734
BUTTE COUNTY	2,101,841	2,179,806	1,570,743	369,632	6,222,022	5,589,118	11,811,140
CALAVERAS COUNTY	938,802	901,127	701,583	282,871	2,824,383	2,496,419	5,320,802
COLUSA COUNTY	733,388	599,708	548,074	103,970	1,985,140	1,950,191	3,935,331
CONTRA COSTA COUNTY	5,475,727	9,885,229	4,740,815	810,873	20,912,644	14,560,799	35,473,443
DEL NORTE COUNTY	380,968	300,416	284,704	98,066	1,064,154	1,013,053	2,077,207
EL DORADO COUNTY	1,992,481	3,438,109	1,844,197	722,721	7,997,508	5,298,314	13,295,822
FRESNO COUNTY	6,931,937	8,368,603	5,180,361	1,040,600	21,521,501	18,433,086	39,954,587
GLENN COUNTY	894,979	736,052	668,834	124,359	2,424,224	2,379,886	4,804,110
HUMBOLDT COUNTY	1,710,576	1,538,771	1,278,344	358,999	4,886,690	4,548,686	9,435,376
IMPERIAL COUNTY	3,128,842	2,315,518	2,338,239	373,771	8,156,370	8,320,071	16,476,441
INYO COUNTY	1,037,287	972,594	775,184	106,130	2,891,195	2,758,307	5,649,502
KERN COUNTY	6,433,033	7,513,593	4,807,521	1,703,233	20,457,380	17,106,424	37,563,804
KINGS COUNTY	1,332,219	1,158,017	995,591	194,450	3,680,277	3,542,574	7,222,851
LAKE COUNTY	935,723	880,049	699,283	298,562	2,813,617	2,488,232	5,301,849
LASSEN COUNTY	899,929	952,386	672,533	112,598	2,637,446	2,393,050	5,030,496
LOS ANGELES COUNTY	39,215,328	72,912,312	33,349,418	2,329,769	147,806,827	104,279,584	252,086,411
MADERA COUNTY	1,944,968	1,466,900	1,453,509	421,943	5,287,320	5,171,968	10,459,288
MARIN COUNTY	1,467,543	2,271,408	1,121,024	257,818	5,117,793	3,902,424	9,020,217
MARIPOSA COUNTY	594,092	518,211	443,976	115,248	1,671,527	1,579,782	3,251,309
MENDOCINO COUNTY	1,390,933	1,168,957	1,039,469	350,604	3,949,963	3,698,706	7,648,669
MERCED COUNTY	2,610,551	2,347,050	1,950,912	505,554	7,414,067	6,941,856	14,355,923
MODOC COUNTY	874,538	860,596	653,558	56,261	2,444,953	2,325,532	4,770,485
MONO COUNTY	643,262	798,122	480,721	28,802	1,950,907	1,710,533	3,661,440
MONTEREY COUNTY	2,909,122	3,775,796	2,174,039	756,970	9,615,927	7,735,802	17,351,729
NAPA COUNTY	1,046,471	1,383,307	782,046	274,753	3,486,577	2,782,726	6,269,303
NEVADA COUNTY	1,083,719	1,501,719	809,882	276,255	3,671,575	2,881,775	6,553,350
ORANGE COUNTY	13,303,405	25,968,303	11,795,522	644,443	51,711,673	35,375,798	87,087,471
PLACER COUNTY	2,960,668	5,443,602	2,730,441	716,748	11,851,459	7,872,870	19,724,329
PLUMAS COUNTY	722,304	1,061,487	539,791	134,447	2,458,029	1,920,717	4,378,746
RIVERSIDE COUNTY	11,695,159	19,785,601	9,369,696	1,354,060	42,204,516	31,099,225	73,303,741
SACRAMENTO COUNTY	8,320,830	12,976,654	6,578,307	1,865,148	29,740,939	22,126,367	51,867,306
SAN BENITO COUNTY	698,270	679,075	521,829	139,491	2,038,665	1,856,806	3,895,471
SAN BERNARDINO COUNTY	11,136,569	18,673,020	8,838,709	1,268,644	39,916,942	29,613,848	69,530,790
SAN DIEGO COUNTY	15,407,147	27,611,004	12,996,609	1,711,603	57,726,363	40,969,971	98,696,334
SAN FRANCISCO COUNTY	2,984,429	4,425,227	2,230,317	9,600	9,649,573	7,936,056	17,585,629
SAN JOAQUIN COUNTY	4,694,248	6,669,899	3,508,096	795,657	15,667,900	12,482,727	28,150,627
SAN LUIS OBISPO COUNTY	2,561,429	2,943,998	1,914,202	576,737	7,996,366	6,811,233	14,807,599
SAN MATEO COUNTY	3,416,031	6,303,808	2,907,012	254,915	12,881,766	9,083,751	21,965,517
SANTA BARBARA COUNTY	2,581,398	3,843,976	2,014,088	700,156	9,139,618	6,864,333	16,003,951
SANTA CLARA COUNTY	7,990,962	14,908,533	6,725,102	264,466	29,889,063	21,249,195	51,138,258
SANTA CRUZ COUNTY	1,693,674	2,477,804	1,346,960	561,171	6,079,609	4,503,740	10,583,349
SHASTA COUNTY	2,001,533	2,292,162	1,495,781	362,729	6,152,205	5,322,384	11,474,589
SIERRA COUNTY	349,534	429,115	261,213	30,617	1,070,479	929,463	1,999,942
SISKIYOU COUNTY	1,432,070	1,551,758	1,070,212	180,578	4,234,618	3,808,094	8,042,712
SOLANO COUNTY	2,495,117	4,045,481	1,872,656	179,556	8,592,810	6,634,900	15,227,710
SONOMA COUNTY	3,600,208	5,002,167	2,690,500	813,513	12,106,388	9,573,506	21,679,894
STANISLAUS COUNTY	3,708,062	4,938,756	2,771,101	637,375	12,055,294	9,860,307	21,915,601
SUTTER COUNTY	1,126,435	1,038,658	841,805	178,904	3,185,802	2,995,365	6,181,167
TEHAMA COUNTY	1,258,509	987,560	940,507	229,500	3,416,076	3,346,570	6,762,646
TRINITY COUNTY	663,071	695,055	495,525	84,107	1,937,758	1,763,209	3,700,967
TULARE COUNTY	4,410,451	4,028,689	3,296,009	637,073	12,372,222	11,728,066	24,100,288
TUOLUMNE COUNTY	874,706	945,925	653,683	281,489	2,755,803	2,325,977	5,081,780
VENTURA COUNTY	4,212,176	7,574,827	3,596,749	540,063	15,923,815	11,200,824	27,124,639
YOLO COUNTY	1,550,876	1,878,141	1,158,997	154,756	4,742,770	4,124,018	8,866,788
YUBA COUNTY	895,470	763,922	669,201	247,686	2,576,279	2,381,193	4,957,472
Total	\$ 214,695,000	\$ 333,803,000	\$ 173,366,500	\$ 30,106,746	\$ 751,971,246	\$ 570,907,003	\$ 1,320,961,248

Notes:

1. The Highway Users Tax is also known as the "Motor Vehicle Fuel Tax", the "Gasoline Excise Tax" and "Article XIX Revenues."
2. Str&HwysCode § 2103 allocations replace the former Prop42 TCRF revenues. Previously adjusted annually by the BOE until July 2019.
3. Pursuant to the Road Repair and Accountability Act of 2017, the state general fund will repay loans from transportation funds totalling \$706 million over three years and in monthly installments beginning FY2017-18. Local streets and roads will be paid \$225 million; \$75 million in each year, half to cities, half to counties. See Gov Code Sec 16321.

Local Streets and Roads - Projected FY2021-22 Revenues

Source: CSAC

Based on State Dept of Finance statewide revenue projections
Estimated May 2021

	Highway Users Tax Acct ⁽¹⁾				TOTAL HUTA	Road Maintnc Rehab Acct	TOTAL Annual
	Sec2103 ⁽²⁾	Sec2104	Sec2105	Sec2106			
ALAMEDA COUNTY	7,768,380	13,320,340	6,070,001	401,485	27,560,206	19,365,644	46,925,850
ALPINE COUNTY	149,804	294,996	140,260	22,075	607,135	373,444	980,579
AMADOR COUNTY	739,379	675,880	501,694	183,673	2,100,626	1,843,184	3,943,810
BUTTE COUNTY	2,512,679	2,372,409	1,704,938	401,863	6,991,889	6,263,808	13,255,697
CALAVERAS COUNTY	1,122,305	969,701	761,523	307,335	3,160,864	2,797,774	5,958,638
COLUSA COUNTY	876,740	606,791	594,898	112,418	2,190,847	2,185,608	4,376,455
CONTRA COSTA COUNTY	6,546,043	10,792,188	5,164,474	882,606	23,385,311	16,318,505	39,703,816
DEL NORTE COUNTY	455,435	318,318	309,028	105,985	1,188,766	1,135,344	2,324,110
EL DORADO COUNTY	2,381,943	3,641,185	1,958,663	786,562	8,768,353	5,937,899	14,706,252
FRESNO COUNTY	8,286,893	9,117,187	5,622,939	1,132,898	24,159,917	20,658,234	44,818,151
GLENN COUNTY	1,069,916	745,047	725,975	134,632	2,675,570	2,667,173	5,342,743
HUMBOLDT COUNTY	2,044,935	1,671,896	1,387,558	390,278	5,494,667	5,097,780	10,592,447
IMPERIAL COUNTY	3,740,423	2,364,243	2,538,005	406,372	9,049,043	9,324,428	18,373,471
INYO COUNTY	1,240,042	979,199	841,411	114,772	3,175,424	3,091,276	6,266,700
KERN COUNTY	7,690,470	8,194,217	5,218,247	1,854,853	22,957,787	19,171,425	42,129,212
KINGS COUNTY	1,592,622	1,263,204	1,080,648	210,998	4,147,472	3,970,216	8,117,688
LAKE COUNTY	1,118,625	959,244	759,025	324,431	3,161,325	2,788,599	5,949,924
LASSEN COUNTY	1,075,834	960,922	729,990	121,819	2,888,565	2,681,927	5,570,492
LOS ANGELES COUNTY	46,880,578	79,631,392	36,348,306	2,537,478	165,397,754	116,867,687	282,265,441
MADERA COUNTY	2,325,142	1,598,252	1,577,688	458,857	5,959,939	5,796,302	11,756,241
MARIN COUNTY	1,754,398	2,477,758	1,219,942	280,039	5,732,137	4,373,504	10,105,641
MARIPOSA COUNTY	710,217	524,627	481,906	124,706	1,841,456	1,770,485	3,611,941
MENDOCINO COUNTY	1,662,813	1,271,298	1,128,275	381,132	4,443,518	4,145,195	8,588,713
MERCED COUNTY	3,120,824	2,562,140	2,117,586	549,953	8,350,503	7,779,842	16,130,345
MODOC COUNTY	1,045,481	863,837	709,394	60,439	2,679,151	2,606,258	5,285,409
MONO COUNTY	768,998	802,224	521,791	30,521	2,123,534	1,917,020	4,040,554
MONTEREY COUNTY	3,477,755	4,121,235	2,359,776	823,878	10,782,644	8,669,629	19,452,273
NAPA COUNTY	1,251,020	1,508,416	848,860	298,490	3,906,786	3,118,643	7,025,429
NEVADA COUNTY	1,295,548	1,616,211	879,074	300,127	4,090,960	3,229,648	7,320,608
ORANGE COUNTY	15,903,764	28,366,688	12,858,534	701,276	57,830,262	39,646,185	97,476,447
PLACER COUNTY	3,539,376	5,828,871	2,923,531	780,054	13,071,832	8,823,243	21,895,075
PLUMAS COUNTY	863,490	1,069,286	585,907	145,624	2,664,307	2,152,576	4,816,883
RIVERSIDE COUNTY	13,981,161	21,603,692	10,208,858	1,474,421	47,268,132	34,853,366	82,121,498
SACRAMENTO COUNTY	9,947,267	14,174,241	7,168,684	2,031,264	33,321,456	24,797,350	58,118,806
SAN BENITO COUNTY	834,757	739,499	566,411	151,120	2,291,787	2,080,951	4,372,738
SAN BERNARDINO COUNTY	13,313,386	20,336,868	9,607,297	1,381,358	44,638,909	33,188,681	77,827,590
SAN DIEGO COUNTY	18,418,715	30,152,375	14,162,784	1,863,972	64,597,846	45,915,659	110,513,505
SAN FRANCISCO COUNTY	3,567,783	4,831,934	2,420,862	9,600	10,830,179	8,894,056	19,724,235
SAN JOAQUIN COUNTY	5,611,812	7,284,551	3,807,806	866,028	17,570,197	13,989,578	31,559,775
SAN LUIS OBISPO COUNTY	3,062,100	3,211,501	2,077,739	627,509	8,978,849	7,633,450	16,612,299
SAN MATEO COUNTY	4,083,747	6,884,622	3,167,968	276,877	14,413,214	10,180,295	24,593,509
SANTA BARBARA COUNTY	3,085,972	4,193,886	2,192,281	761,977	10,234,116	7,692,960	17,927,076
SANTA CLARA COUNTY	9,552,920	16,284,611	7,330,760	287,282	33,455,573	23,814,290	57,269,863
SANTA CRUZ COUNTY	2,024,729	2,699,359	1,464,175	610,550	6,798,813	5,047,409	11,846,222
SHASTA COUNTY	2,392,764	2,482,489	1,623,572	394,342	6,893,167	5,964,875	12,858,042
SIERRA COUNTY	417,855	430,464	283,529	32,499	1,164,347	1,041,664	2,206,011
SISKIYOU COUNTY	1,711,990	1,566,826	1,161,644	195,885	4,636,345	4,267,788	8,904,133
SOLANO COUNTY	2,982,827	4,417,557	2,040,314	194,771	9,635,469	7,435,831	17,071,300
SONOMA COUNTY	4,303,925	5,457,938	2,920,360	885,482	13,567,705	10,729,171	24,296,876
STANISLAUS COUNTY	4,432,861	5,393,398	3,007,847	693,575	13,527,681	11,050,593	24,578,274
SUTTER COUNTY	1,346,615	1,132,813	913,724	194,060	3,587,212	3,356,950	6,944,162
TEHAMA COUNTY	1,504,505	1,005,027	1,020,858	249,186	3,779,576	3,750,551	7,530,127
TRINITY COUNTY	792,679	699,580	537,860	90,777	2,120,896	1,976,054	4,096,950
TULARE COUNTY	5,272,542	4,391,189	3,577,600	693,246	13,934,577	13,143,819	27,078,396
TUOLUMNE COUNTY	1,045,681	1,014,918	709,530	305,829	3,075,958	2,606,757	5,682,715
VENTURA COUNTY	5,035,512	8,267,888	3,917,302	587,552	17,808,254	12,552,930	30,361,184
YOLO COUNTY	1,854,019	2,049,889	1,258,015	167,751	5,329,674	4,621,848	9,951,522
YUBA COUNTY	1,070,504	829,685	726,373	269,000	2,895,562	2,668,639	5,564,201
Total	\$ 256,660,500	\$ 363,026,000	\$ 188,544,000	\$ 30,663,546	\$ 838,894,046	\$ 570,907,000	\$ 1,409,801,046

Notes:

- The Highway Users Tax is also known as the "Motor Vehicle Fuel Tax", the "Gasoline Excise Tax" and "Article XIX Revenues."
- Str&HwysCode § 2103 allocations replace the former Prop42 CTRF revenues. Previously adjusted annually by the BOE until July 2019.